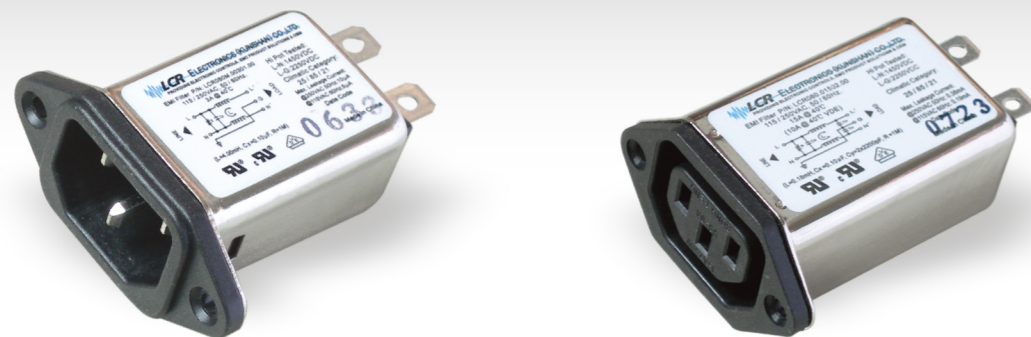


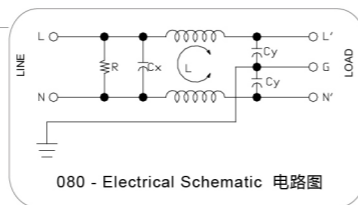
LCR 080 / 080M

General Purpose and Medical Type Power Entry and Outlet Filters
通用型, 医疗型公母头插座式电源滤波器



LCR 080 Series/系列

General Purpose Power Entry Filter
通用型插座式电源滤波器



Features/特点

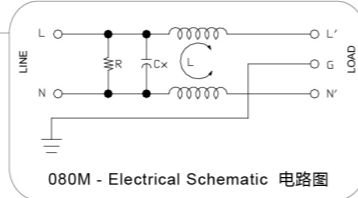
General purpose, compact, easy to use power entry filter. Faston tabs or solder terminals for easy installation and use.
通用, 小巧, 端子嵌入或焊锡, 方便安装和使用

Typical Applications/应用范围

Computers, communication equipment, LCD TV, electrical Equipment.
电脑, 通信设备, 液晶电视, 电动玩具

LCR 080M Series/系列

Low Leakage Current Medical Type Power Entry Filters
低漏电流医疗型电源滤波器



Features/特点

Very low leakage current, compact, easy to use power entry filter with faston tabs or solder terminals.
低漏电流, 小巧, 端子嵌入或焊锡, 方便安装和使用

Typical Applications/应用范围

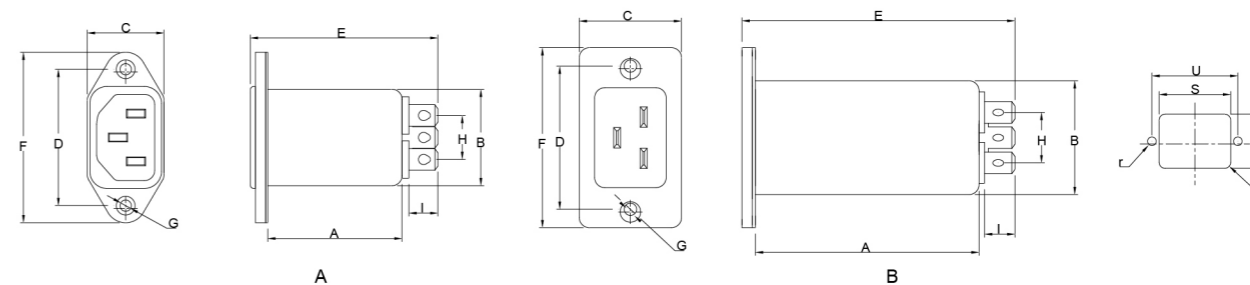
Medical equipment and medical typical applications.
医疗设备及医疗特别应用

Technical Data/技术参数

Rated Voltage Max. (V) 最高额定电压	250 VAC	Leakage Current 080 Series 080系列 漏电流	
Rated Current (A) 额定电流	1 - 20A @ 40°C	@250 VAC 50Hz	0.42 mA Max.
Operating Frequency (Hz) 工作频率	50 / 60Hz	@115 VAC 60Hz	0.23 mA Max.
Hipot Rating 高压等级		Leakage Current 080M Series 080M系列 漏电流	
(Line to Line 线对线)	1450V DC	@250 VAC 50Hz	10µA Max.
(Line to Ground 线对地)	2250V DC	@115 VAC 60Hz	5µA Max.
Case 外壳	Plated Steel	IP Class 防尘防水等级	IP52
Packaging Quantity 包装数量	224 Pcs per carton	Climatic category 气候类别 (EN60068-1)	25 / 85 / 21

Model No. 型号	Model No. 型号	Rated Current @ 40°C 额定电流	Mechanical Diagram 外形图	Unit Weight 单重 (g)	Terminal Options 连接方式	
					In 入	Out 出
080.00101.00	080M.00101.00	1A	A	44	IEC Inlet Socket	Faston 6.35*0.8
080.00301.00	080M.00301.00	3A	A	45	IEC Inlet Socket	Faston 6.35*0.8
080.00601.00	080M.00601.00	6A	A	45	IEC Inlet Socket	Faston 6.35*0.8
080.00801.00	080M.00801.00	8A	A	45	IEC Inlet Socket	Faston 6.35*0.8
080.01001.00	080M.01001.00	10A	A	46	IEC Inlet Socket	Faston 6.35*0.8
080.01502.00	080M.01502.00	15A	A	70	IEC Outlet Socket	Faston 6.35*0.8
080.02001.00	080M.02001.00	20A	B	98	IEC Inlet Socket	Faston 6.35*0.8
080.02002.00	080M.02002.00	20A	B	120	IEC Outlet Socket	Faston 6.35*0.8

LCR 080/080M Mechanical Outlines/外形图



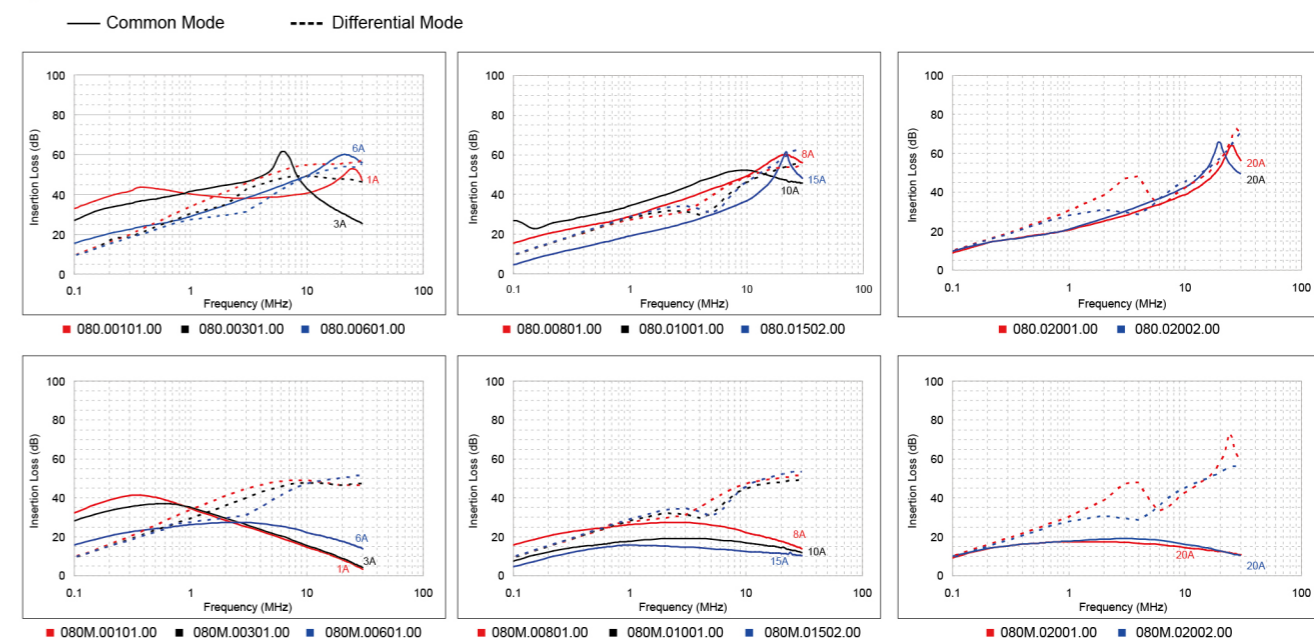
LCR 080/080M Mechanical Dimensions (mm)/外形尺寸

Model No.	Model No.	A	B	C	D	E	F	G	H	I	R	S	T	U	r
080.00101.00	080M.00101.00	40	28.3	22.5	40	55	50	2*Φ4.0	12.9	8.5	3	29	21	40	2.1
080.00301.00	080M.00301.00	40	28.3	22.5	40	55	50	2*Φ4.0	12.9	8.5	3	29	21	40	2.1
080.00601.00	080M.00601.00	40	28.3	22.5	40	55	50	2*Φ4.0	12.9	8.5	3	29	21	40	2.1
080.00801.00	080M.00801.00	40	28.3	22.5	40	55	50	2*Φ4.0	12.9	8.5	3	29	21	40	2.1
080.01001.00	080M.01001.00	40	28.3	22.5	40	55	50	2*Φ4.0	12.9	8.5	3	29	21	40	2.1
080.01502.00	080M.01502.00	53.5	33.6	29	40	67.5	50.4	2*Φ4.0	15	8.8	3	35	26.5	40	2.1
080.02001.00	080M.02001.00	66.5	33.9	30.5	42	80.5	53	2*Φ4.0	15	8.8	3	35	26.5	42	2.1
080.02002.00	080M.02002.00	66.5	39.3	34.8	45	80.5	54.5	2*Φ4.0	15	8.8	3	41	32	45	2.1

所有单位为mm, 1 inch=25.4 mm (All dimensions in mm)

For reference purpose only 仅供参考

LCR 080/080M Insertion Loss in dB measured in a 50Ω system /50 Ω环境下插入损耗



☆ Other specifications, requirements and customizations can be offered upon request. / 其它规格可以根据您的要求定做