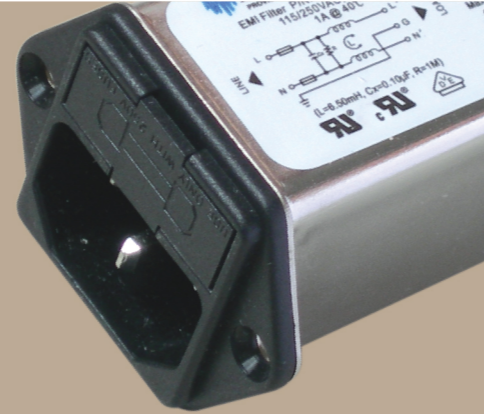


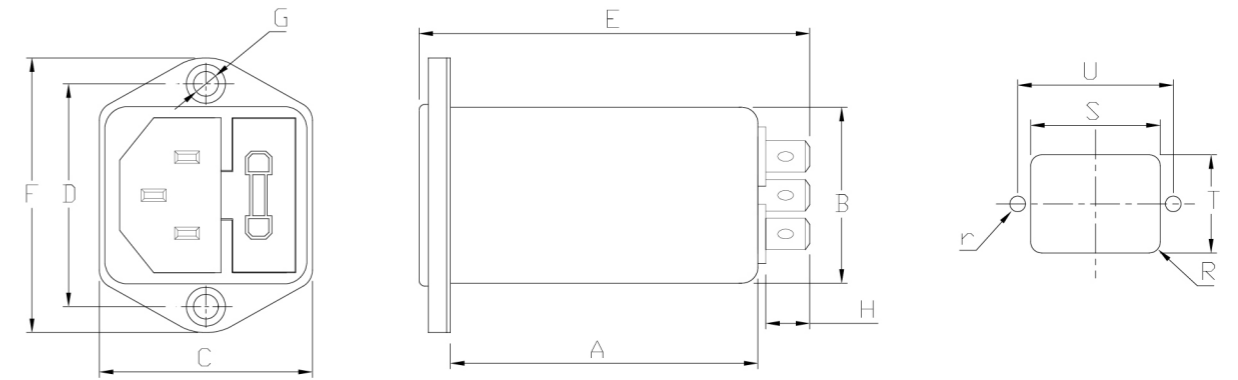
# LCR 081 / 081M

**General Purpose and Medical Type Filtered Power Entry Modules With Fuse Holder**  
带保险丝的（通用，医疗）型插座式电源滤波器



081 Model No. 型号	081M Model No. 型号	Rated Current @ 40°C 额定电流	Unit Weight 单重 (g)	Terminal Options 连接方式	
				In 入	Out 出
081.00101.00	081M.00101.00	1 A	62	IEC Inlet Socket	Faston 6.35*0.8
081.00301.00	081M.00301.00	3 A	64	IEC Inlet Socket	Faston 6.35*0.8
081.00601.00	081M.00601.00	6 A	64	IEC Inlet Socket	Faston 6.35*0.8
081.01001.00	081M.01001.00	10 A	66	IEC Inlet Socket	Faston 6.35*0.8

## LCR 081/081M Mechanical Outlines/外形图



## LCR 081/081M Mechanical Dimensions (mm)/外形尺寸

Model No.	Model No.	A	B	C	D	E	F	G	H	I	R	S	T	U	r
081.00101.00	081M.00101.00	50.9	28.5	34	36.1	66	44.5	2*Φ4.0	8.8	12	3	29.5	33.5	36.1	2.1
081.00301.00	081M.00301.00	50.9	28.5	34	36.1	66	44.5	2*Φ4.0	8.8	12	3	29.5	33.5	36.1	2.1
081.00601.00	081M.00601.00	50.9	28.5	34	36.1	66	44.5	2*Φ4.0	8.8	12	3	29.5	33.5	36.1	2.1
081.01001.00	081M.01001.00	50.9	28.5	34	36.1	66	44.5	2*Φ4.0	8.8	12	3	29.5	33.5	36.1	2.1

所有单位为mm, 1 inch=25.4 mm (All dimensions in mm)

For reference purpose only 仅供参考

## LCR 081 Series/系列

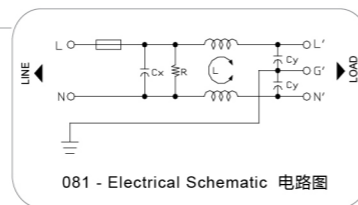
General Purpose Filtered Power Entry Modules with Fuse Holder  
带保险座的通用型插座式电源滤波器

### Features/特点

Compact safety module, easy to use power entry filter with safety fuse. Available with faston tabs or solder terminals.  
小巧安全模块, 带保险丝, 方便安装, 嵌入或焊锡端子

### Typical Applications/应用范围

Electronic equipment, network equipment and any other equipment which requires safety fuse.  
电子设备, 网络设备, 及其他需用保险丝的设备



## LCR 081M Series/系列

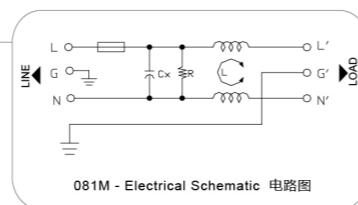
Low Leakage Current Medical Type Filtered Power Entry Modules with Not Included  
低漏电流, 带保险座的医疗型插座式电源滤波器

### Features/特点

Compact safety module, very low leakage current and easy to use power entry filter with safety fuse. Available with faston tabs or solder terminals.  
小巧安全模块, 带安全保险丝, 低漏电流, 方便安装, 嵌入或焊锡端子

### Typical Applications/应用范围

Medical equipment and for medical applications which requires integrated safety fuse.  
需用集成安全保险丝的医疗设备及医疗应用

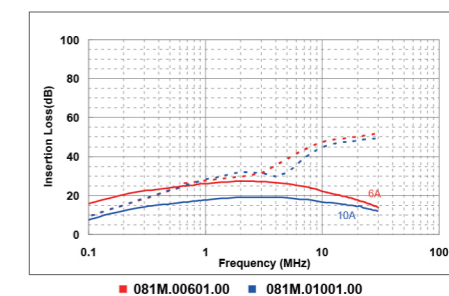
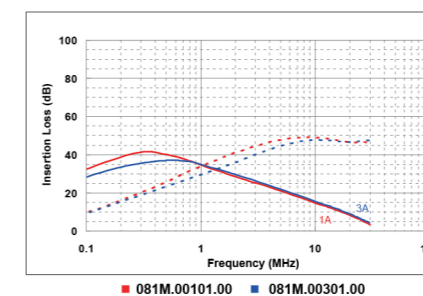
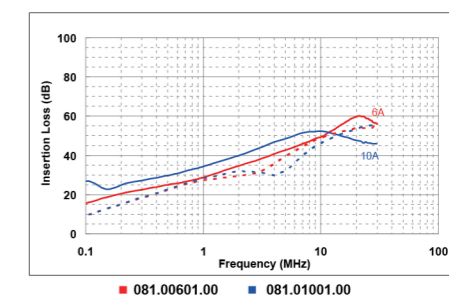
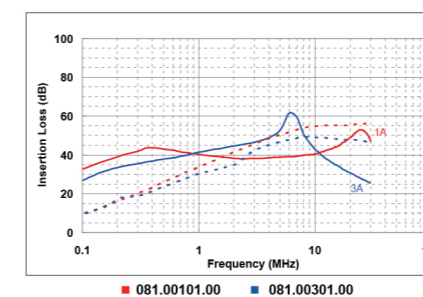


### Technical Data/技术参数

Rated Voltage Max. (V) 最高额定电压	250VAC	Leakage Current 081 Series 081系列 漏电流	
Rated Current (A) 额定电流	1 - 10A @ 40°C	@ 250 VAC 50Hz	0.42 mA Max.
Operating Frequency (Hz) 工作频率	50 / 60Hz	@ 115 VAC 60Hz	0.23 mA Max.
Hipot Rating 高压等级		Leakage Current 081M Series 081M系列 漏电流	
(Line to Line 线对线)	1450V DC	@ 250 VAC 50Hz	10µA Max.
(Line to Ground 线对地)	2250V DC	@ 115 VAC 60Hz	5µA Max.
Case 外壳	Plated Steel	IP Class 防尘防水等级	IP51
Packaging Quantity 包装数量	126 Pcs per carton	Climatic category 气候类别 (EN60068-1)	25 / 85 / 21

## LCR 081/081M Insertion Loss in dB measured in a 50Ω system /50 Ω环境下插入损耗

— Common Mode --- Differential Mode



☆ Other specifications, requirements and customizations can be offered upon request. / 其它规格可以根据您的要求定做