

LCR 082 / 082M

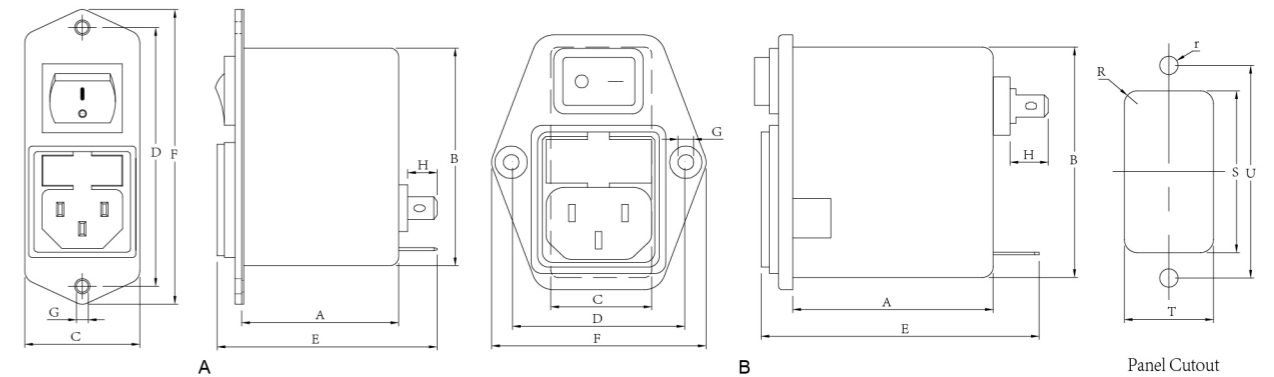
General Purpose and Medical Type Filtered Power Entry Modules With Fuse Holder and Switch
带保险丝和开关（通用，医疗）型插座式电源滤波器



Model No. 型号	Model No. 型号	Rated Current @ 40°C 额定电流	Unit Weight 单重 (g)	Mechanical Diagram 外形图	Terminal Options 连接方式	
					In 入	Out 出
082.00101.00	082M.00101.00	1 A	92	A/B	IEC Inlet Socket	Faston 6.35*0.8
082.00301.00	082M.00301.00	3 A	93	A/B	IEC Inlet Socket	Faston 6.35*0.8
082.00302.00	082M.00302.00	3 A	93	A/B	IEC Inlet Socket	Faston 4.8*0.8
082.00601.00	082M.00601.00	6 A	94	A/B	IEC Inlet Socket	Faston 6.35*0.8
082.01001.00	082M.01001.00	10 A	100	A/B	IEC Inlet Socket	Faston 6.35*0.8

Please mark switch type at the end of the P/N when order or inquiry / 请在订单或询价单上注明开关类型

LCR 082/082M Mechanical Outlines/外形图



LCR 082/082M Mechanical Dimensions (mm)/外形尺寸

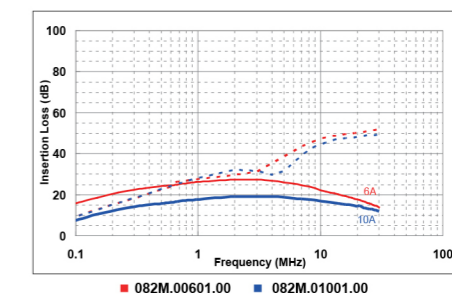
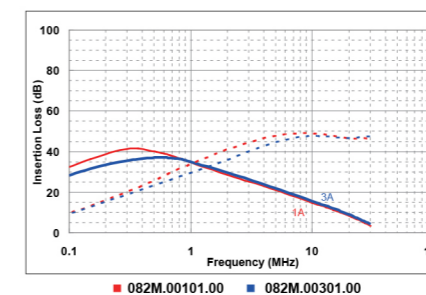
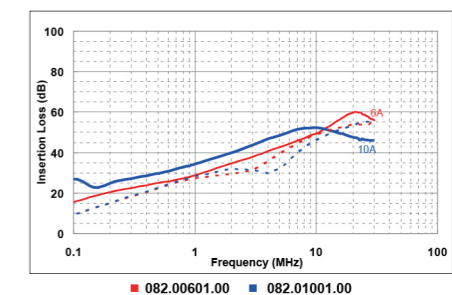
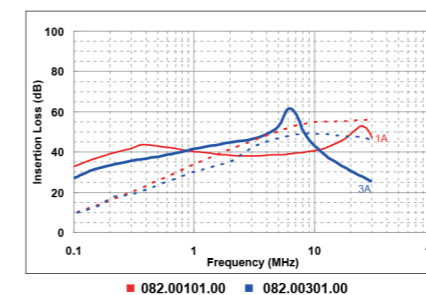
Model No.	Model No.	A	B	C	D	E	F	G	H	R	S	T	U	r
082.00101.00	082M.00101.00	43.7	60.6	32	72	61	82	2*Φ4.0	8.8	2.5	61	30	72	2.1
082.00301.00	082M.00301.00	43.7	60.6	32	72	61	82	2*Φ4.0	8.8	2.5	61	30	72	2.1
082.00302.00	082M.00302.00	46.0	53.0	29	40	61	55	2*Φ3.2	8.5	2.5	56	29.5	40	1.6
082.00601.00	082M.00601.00	43.7	60.6	32	72	61	82	2*Φ4.0	8.8	2.5	61	30	72	2.1
082.01001.00	082M.01001.00	43.7	60.6	32	72	61	82	2*Φ4.0	8.8	2.5	61	30	72	2.1

所有单位为mm, 1 inch=25.4 mm (All dimensions in mm)

For reference purpose only 仅供参考

LCR 082/082M Insertion Loss in dB measured in a 50Ω system /50 Ω环境下插入损耗

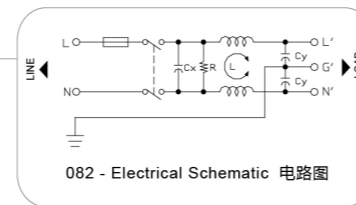
— Common Mode - - - Differential Mode



☆ Other specifications, requirements and customizations can be offered upon request. / 其它规格可以根据您的要求定做

LCR 082 Series/系列

General Purpose Filtered Power Entry Modules with Fuse Holder and Switch
带保险座和开关的通用型插座式电源滤波器



Features/特点

Compact Integrated power entry module with safety fuse and on/off switch Easy to use and install with faston tabs or solder terminals.

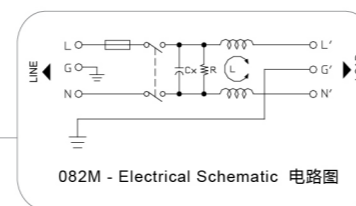
集成小巧带保险丝和开关, 方便使用, 嵌入或焊锡式端子

Typical Applications/应用范围

Compact design electronic equipment, PC, printers, plotters.
集成型电子设备, 电脑, 打印机, 绘图机, 开关模式应用等

LCR 082M Series/系列

Low Leakage Current Medical Type Filtered Power Entry Modules with Fuse Holder and Switch
低漏电流, 带保险座和开关的医疗型插座式电源滤波器



Features/特点

Low leakage current, compact Integrated power entry module with safety fuse and on/off switch. Easy to use and install with faston tabs or solder terminals.

低漏电流, 带集成保险丝和开关, 方便使用, 嵌入或焊锡式端子

Typical Applications/应用范围

Medical or low leakage current requirements, compact design electronic equipment.
医疗或低漏电流需求, 集成设计电子设备

Ordering Part Number System for 082(M) series / 产品编码说明
Switch Options / 开关类型

Code	SR	SB
Type	Switch-Red Illuminate	Switch-BLK

Technical Data/技术参数

Rated Voltage Max. (V) 最高额定电压	250VAC	Leakage Current 082 Series 082系列 漏电流	
Rated Current (A) 额定电流	1 - 10A @ 40°C	@250 VAC 50Hz	0.42 mA Max.
Operating Frequency (Hz) 工作频率	50 / 60Hz	@115 VAC 60Hz	0.23 mA Max.
Hipot Rating 高压等级		Leakage Current 082M Series 082M系列 漏电流	
(Line to Line 线对线)	1450V DC	@250 VAC 50Hz	10µA Max.
(Line to Ground 线对地)	2250V DC	@115 VAC 60Hz	5µA Max.
Case 外壳	Plated Steel	IP Class 防尘防水等级	IP51
Packaging Quantity 包装数量	90 Pcs per carton	Climatic category 气候类别 (EN60068-1)	25 / 85 / 21