

LCR 083 / 083M

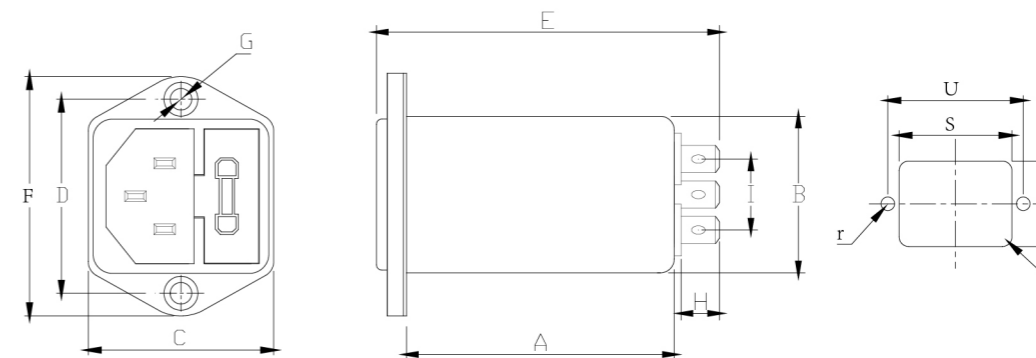
General Purpose and Medical Type Filtered Power Entry Modules With Double Fuse Holder
带2个保险丝的(通用, 医疗)型插座式滤波器



Model No. 型号	Model No. 型号	Rated Current @ 40°C 额定电流	Unit Weight 单重 (g)	Terminal Options 连接方式	
				In 入	Out 出
083.00101.00	083M.00101.00	1 A	62	IEC Inlet Socket	Faston 6.35*0.8
083.00301.00	083M.00301.00	3 A	64	IEC Inlet Socket	Faston 6.35*0.8
083.00601.00	083M.00601.00	6 A	64	IEC Inlet Socket	Faston 6.35*0.8
083.01001.00	083M.01001.00	10 A	66	IEC Inlet Socket	Faston 6.35*0.8

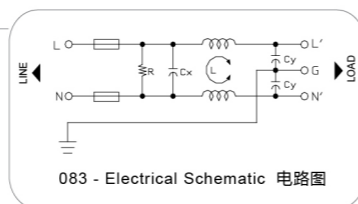


LCR 083/083M Mechanical Outlines/外形图



LCR 083 Series/系列

General Purpose Filtered Power Entry Modules With Double Fuse Holder
带2个保险座的通用型插座式滤波器



Features/特点

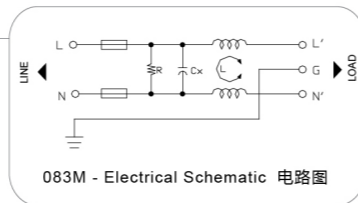
Compact double safety fuse module, easy to use power entry filter with two safety fuses on line and neutral. Available with faston tabs or solder terminals.
小巧安全模块, 带保险丝, 方便安装, 嵌入或焊锡端子

Typical Applications/应用范围

Compact design electronic equipment with safety and protection requirements.
有安全保护需求的集成设计电子设备

LCR 083M Series/系列

Low Leakage Current Medical Type Filtered Power Entry Modules with Double Fuse Holder
低漏电流, 医疗型带2个保险座的插座式电源滤波器



Features/特点

Low leakage current, compact double safety fuse module, easy to use power entry filter with two safety fuses on both line and neutral. Available with faston tabs or solder terminals.
低漏电流, 集成双保险丝模块, 方便使用, 在火线和零线处各带1个保险丝, 嵌入和焊锡连接

Typical Applications/应用范围

Medical or low leakage current compact design electronic equipment with safety and protection requirements.
适用有安全保护需求的医疗和低漏电流集成设计电子设备

Technical Data/技术参数

Rated Voltage Max. (V) 最高额定电压	250VAC	Leakage Current 083 Series 083系列 漏电流	
Rated Current (A) 额定电流	1 - 10A @ 40°C	@250 VAC 50Hz	0.42 mA Max.
Operating Frequency (Hz) 工作频率	50 / 60Hz	@115 VAC 60Hz	0.23 mA Max.
Hipot Rating 高压等级		Leakage Current 083M Series 083M系列 漏电流	
(Line to Line 线对线)	1450V DC	@250 VAC 50Hz	10 μA Max.
(Line to Ground 线对地)	2250V DC	@115 VAC 60Hz	5 μA Max.
Case 外壳	Plated Steel	IP Class 防尘防水等级	IP51
Packaging Quantity 包装数量	126 Pcs per carton	Climatic category 气候类别 (EN60068-1)	25 / 85 / 21

LCR 083/083M Mechanical Dimensions (mm)/外形尺寸

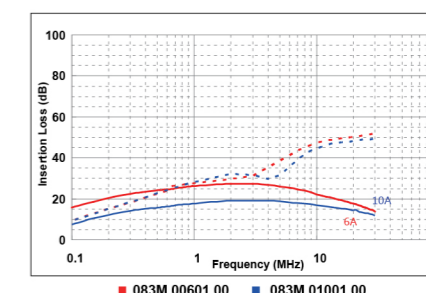
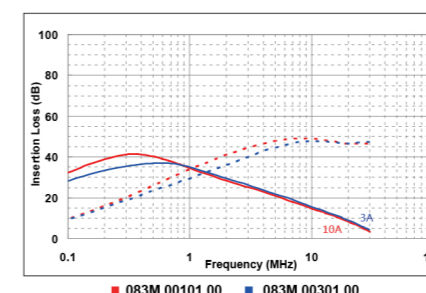
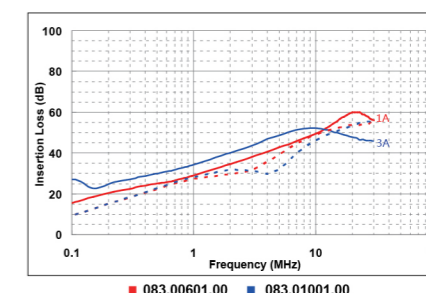
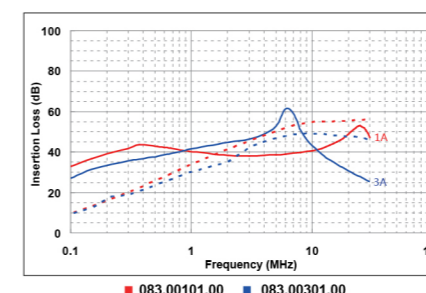
Model No.	Model No.	A	B	C	D	E	F	G	H	I	R	S	T	U	r
083.00101.00	083M.00101.00	50.9	28.5	34	36.1	66	44.5	2*Φ4.0	8.8	12	3	29.5	33.5	36.1	2.1
083.00301.00	083M.00301.00	50.9	28.5	34	36.1	66	44.5	2*Φ4.0	8.8	12	3	29.5	33.5	36.1	2.1
083.00601.00	083M.00601.00	50.9	28.5	34	36.1	66	44.5	2*Φ4.0	8.8	12	3	29.5	33.5	36.1	2.1
083.01001.00	083M.01001.00	50.9	28.5	34	36.1	66	44.5	2*Φ4.0	8.8	12	3	29.5	33.5	36.1	2.1

所有单位为mm, 1 inch=25.4 mm (All dimensions in mm)

For reference purpose only 仅供参考

LCR 083/083M Insertion Loss in dB measured in a 50Ω system /50 Ω环境下插入损耗

— Common Mode --- Differential Mode



☆ Other specifications, requirements and customizations can be offered upon request. / 其它规格可以根据您的要求定做