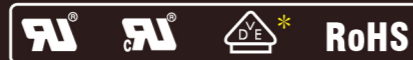


# LCR 085 / 085M

General Purpose and Medical Type Filtered Power Entry Modules with a Switch

带1个开关的(通用, 医疗)型插座式电源滤波器



## LCR 085 Series/系列

General Purpose Filtered Power Entry Modules with a Switch  
通用型带1个开关的插座式电源滤波器

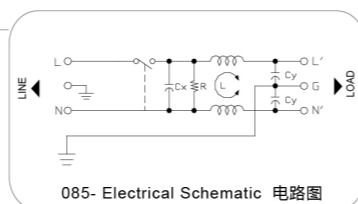
### Features/特点

Compact integrated power entry module with on/off switch. Faston tabs and other terminal options available.

集成带开关模块, 嵌入或其它连接方式

### Typical Applications/应用范围

Compact electronic equipment, 1U rack assemblies.  
集成电子设备, 1U 机箱组装



## LCR 085M Series/系列

Low Leakage Current, Medical Type Filtered Power Entry Modules with a Switch  
带1个开关的医疗型插座式电源滤波器

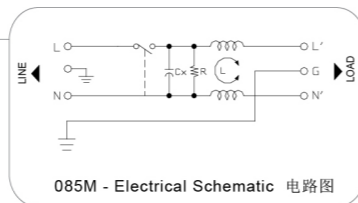
### Features/特点

Low Leakage current, compact integrated power entry module with on/off switch. Faston tabs and other terminal options available.

低漏电流, 紧凑集成, 带开关, 嵌入或其它连接方式

### Typical Applications/应用范围

Medical and compact electronic equipment and applications requiring low leakage current.  
对低漏电流有需求的医疗, 集成电子设备



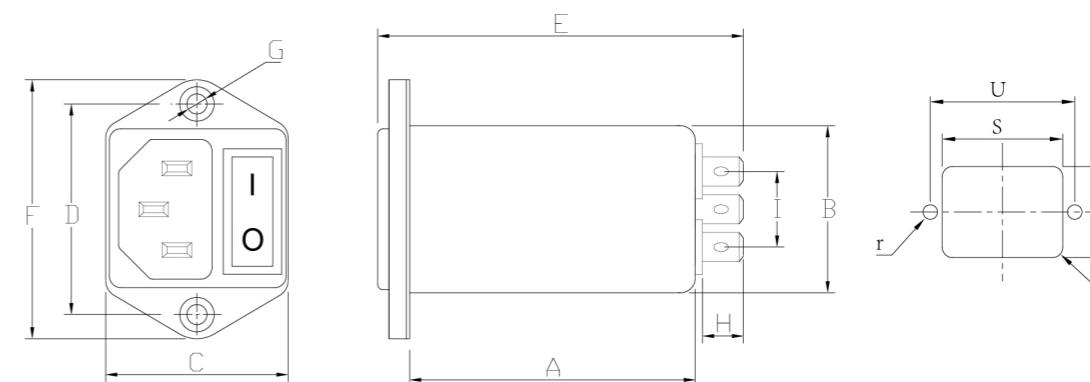
### Technical Data/技术参数

Rated Voltage Max. (V) 最高额定电压	250VAC	Leakage Current 085 Series 085系列 漏电流	
Rated Current (A) 额定电流	1 - 10A @ 40°C	@250 VAC 50Hz	0.42 mA Max.
Operating Frequency (Hz) 工作频率	50 / 60Hz	@115 VAC 60Hz	0.23 mA Max.
Hipot Rating 高压等级		Leakage Current 085M Series 085M系列 漏电流	
(Line to Line 线对线)	1450V DC	@250 VAC 50Hz	10µA Max.
(Line to Ground 线对地)	2250V DC	@115 VAC 60Hz	5µA Max.
Case 外壳	Plated Steel	IP Class 防尘防水等级	IP51
Packaging Quantity 包装数量	126 Pcs per carton	Climatic category 气候类别 (EN60068-1)	25 / 85 / 21

\* Under Application / 正在申请

Model No. 型号	Model No. 型号	Rated Current @ 40°C 额定电流	Unit Weight 单重 (g)	Terminal Options 连接方式	
				In 入	Out 出
085.00101.00	085M.00101.00	1 A	63	IEC Inlet Socket	Faston 6.35*0.8
085.00301.00	085M.00301.00	3 A	63	IEC Inlet Socket	Faston 6.35*0.8
085.00601.00	085M.00601.00	6 A	65	IEC Inlet Socket	Faston 6.35*0.8
085.01001.00	085M.01001.00	10 A	65	IEC Inlet Socket	Faston 6.35*0.8

## LCR 085/085M Mechanical Outlines/外形图



## LCR 085/085M Mechanical Dimensions (mm)/外形尺寸

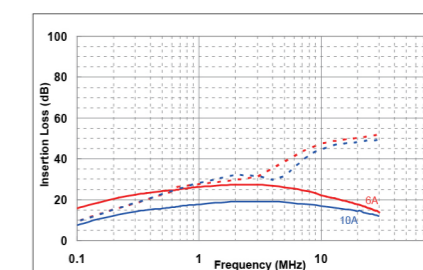
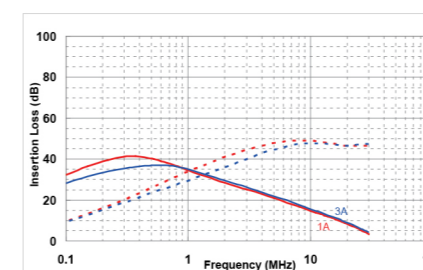
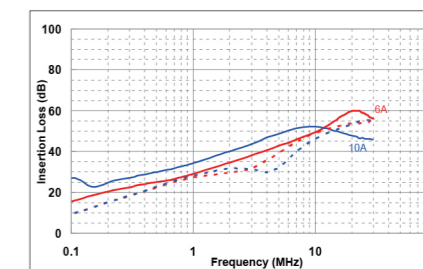
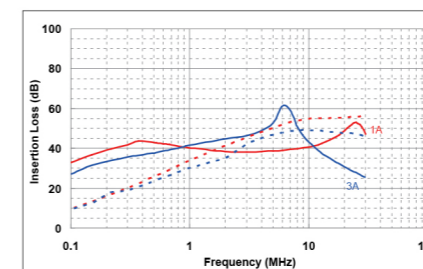
Model No.	Model No.	A	B	C	D	E	F	G	H	I	R	S	T	U	r
085.00101.00	085M.00101.00	50.9	28.5	33	36	67	44	2*4.0	8.8	12	3	29.5	33.5	36.1	2.1
085.00301.00	085M.00301.00	50.9	28.5	33	36	67	44	2*4.0	8.8	12	3	29.5	33.5	36.1	2.1
085.00601.00	085M.00601.00	50.9	28.5	33	36	67	44	2*4.0	8.8	12	3	29.5	33.5	36.1	2.1
085.01001.00	085M.01001.00	50.9	28.5	33	36	67	44	2*4.0	8.8	12	3	29.5	33.5	36.1	2.1

所有单位为mm, 1 inch=25.4 mm (All dimensions in mm)

For reference purpose only 仅供参考

## LCR 085/085M Insertion Loss in dB measured in a 50Ω system /50 Ω环境下插入损耗

— Common Mode    - - - Differential Mode



\* Other specifications, requirements and customizations can be offered upon request. / 其它规格可以根据您的要求定做