

LCR 086 / 086M

High Performance General Purpose and Medical Type Power Entry Filters
高性能 (通用, 医疗) 型插座式电源滤波器



LCR 086 Series/系列

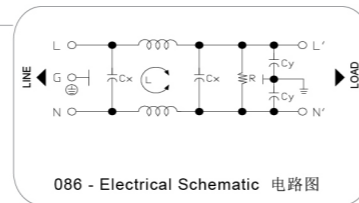
High Performance General Purpose Power Entry Filter
高性能插座式电源滤波器

Features/特点

High performance power entry filters with IEC inlet socket.
高性能, IEC插座式电源滤波器

Typical Applications/应用范围

Industrial and communication equipment.
用于工业和通信设备



LCR 086M Series/系列

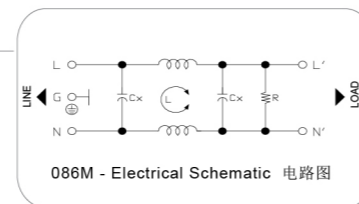
Low Leakage Current Medical Type High Performance Power Entry Filter
低漏电流, 医疗型高性能插座式电源滤波器

Features/特点

Low leakage current high performance filters with IEC inlet socket.
高性能, 低漏电流, IEC插座式电源滤波器

Typical Applications/应用范围

Applicable for medical equipment.
用于医疗设备



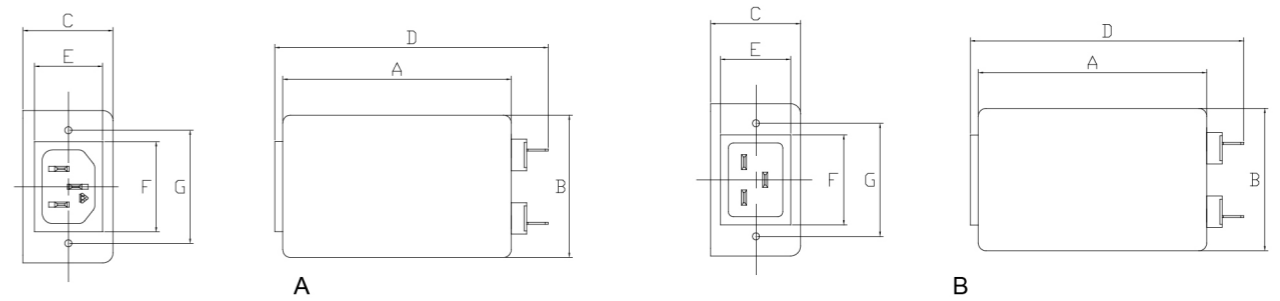
Technical Data/技术参数

Rated Voltage Max. (V) 最高额定电压	250VAC	Leakage Current 086 Series 086系列 漏电流	
Rated Current (A) 额定电流	3 - 20A @ 40°C	@250 VAC 50Hz	0.89 mA Max.
Operating Frequency (Hz) 工作频率	50 / 60Hz	@115 VAC 60Hz	0.49 mA Max.
Hipot Rating 高压等级		Leakage Current 086M Series 086M系列 漏电流	
(Line to Line 线对线)	1450V DC	@250 VAC 50Hz	10µA Max.
(Line to Ground 线对地)	2250V DC	@115 VAC 60Hz	5µA Max.
Case 外壳	Plated Steel	IP Class 防尘防水等级	IP52
Packaging Quantity 包装数量	45 Pcs per carton	Climatic category 气候类别 (EN60068-1)	25 / 85 / 21

* Under Application / 正在申请

Model No. 型号	Model No. 型号	Rated Current @ 40°C 额定电流	Mechanical Diagram 外形图	Unit Weight 单重 (g)	Terminal Options 连接方式	
					In 入	Out 出
086.00301.00	086M.00301.00	3 A	A	150	IEC Inlet Socket	Faston 6.35*0.8
086.00601.00	086M.00601.00	6 A	A	158	IEC Inlet Socket	Faston 6.35*0.8
086.01001.00	086M.01001.00	10 A	A	175	IEC Inlet Socket	Faston 6.35*0.8
086.01501.00	086M.01501.00	15 A	B	180	IEC Inlet Socket	Faston 6.35*0.8
086.02001.00	086M.02001.00	20 A	B	200	IEC Inlet Socket	Faston 6.35*0.8

LCR 086/086M Mechanical Outlines/外形图



LCR 086/086M Mechanical Dimensions (mm)/外形尺寸

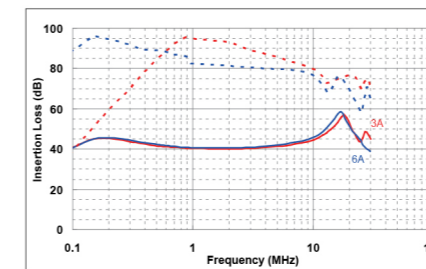
Model No.	Model No.	A	B	C	D	E	F	G
086.00301.00	086M.00301.00	92	56	33.5	107	24	31	40
086.00601.00	086M.00601.00	92	56	33.5	107	24	31	40
086.01001.00	086M.01001.00	92	56	33.5	107	24	31	40
086.01501.00	086M.01501.00	92	56	33.5	107	27.7	35.5	42
086.02001.00	086M.02001.00	92	56	33.5	107	27.7	35.5	42

所有单位为mm, 1 inch=25.4 mm (All dimensions in mm)

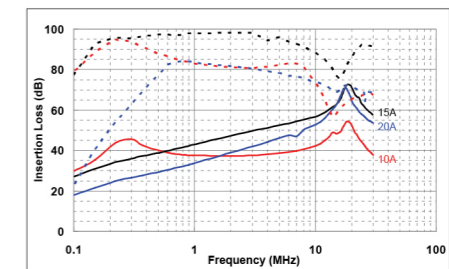
For reference purpose only 仅供参考

LCR 086/086M Insertion Loss in dB measured in a 50Ω system /50 Ω环境下插入损耗

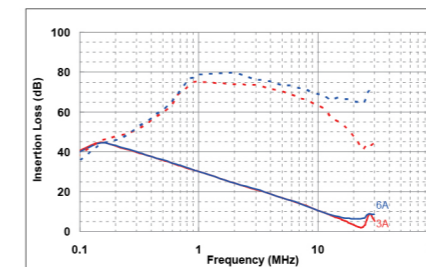
— Common Mode - - - Differential Mode



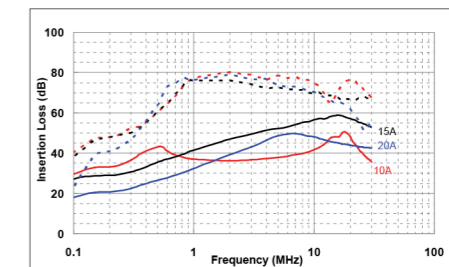
086.00301.00 086.00601.00



086.01001.00 086.01501.00 086.02001.00



086M.00301.00 086M.00601.00



086M.01001.00 086M.01501.00 086M.02001.00

* Other specifications, requirements and customizations can be offered upon request. / 其它规格可以根据您的要求定做