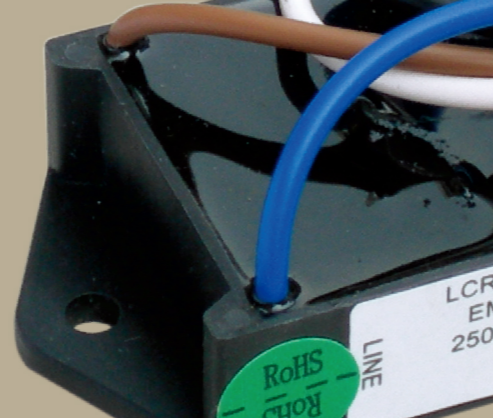


# LCR 050

## Insulated Single Phase Box Type Filters 绝缘级单相箱体滤波器



## LCR 050 Series/系列

### Features/特点

VDE certified per EN60939-2, LCR 050 series is an optimal fully insulated series of EMI filters which provide exactly what is needed to suppress EMI and bring appliances into compliance.

根据EN60939-2 VDE认证产品, 050系列产品是最优的客制化产品, 它可以准确的抑制电磁干扰信号, 为您量身定做的产品可以让您的产品遵从安规要求。

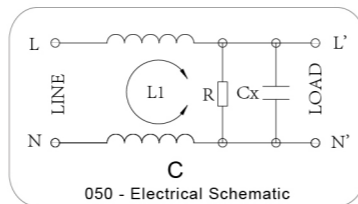
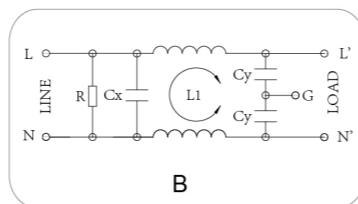
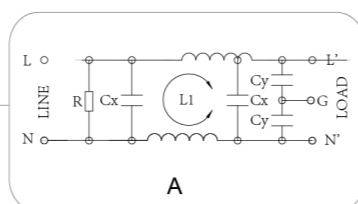
Sealed to IP 68 and made of high insulation resistance materials to provide full insulation, compact box type and easy mounting with wire or terminals interface, these EMI Filters provides cost effective design to fit the application and it needs. With optional power cord and safety fuse holder.

密封产品遵从防尘防水等级IP68, 由高绝缘材料制作提供完成绝缘产品, 小型化箱体设计的单相滤波器。输入输出电线、端子、连接件、快插端子或环形端子连接方式方便安装, 基于定制化最优成本设计来满足您的需求。也可以配带IEC插头的电源线和保险丝座。

### Typical Applications/应用范围

Electrical lawn mower, vacuum cleaners, power tools, refrigerators and home appliances, medical equipments and other general applications.

割草机, 吸尘器, 吸尘器, 电动工具, 电冰箱和家用电器, 医疗设备和其它的通用设备。



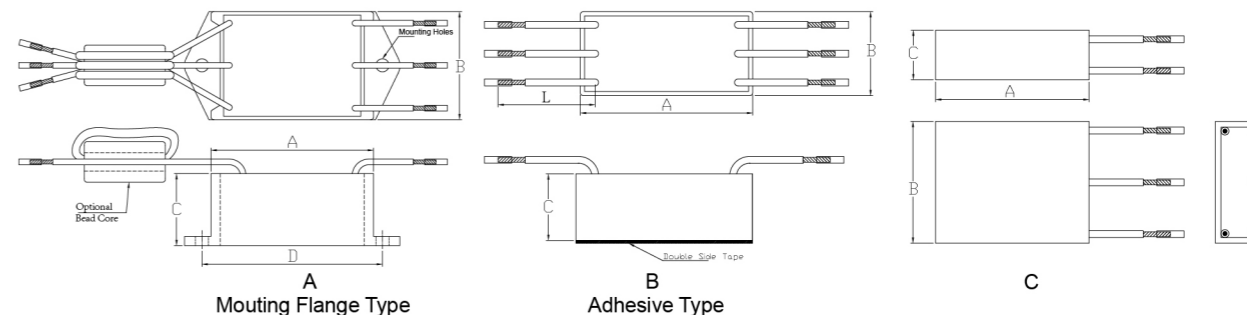
### Technical Data/技术参数

Rated Voltage 额定电压	115 / 250 VAC	Terminals and Interface 引线	FASTON Terminals/ Wire Lead/ Ring Terminals
Rated Current 额定电流	1A - 20A @ 40C (VDE 1~10A)	Climatic Category 气候类别 (EN 60068-1)	25/85/21
Operating Frequency 工作频率	50Hz - 20KHz	Flammability 防火标准	UL 94V-0
Hi-Pot 高压		GWFI (EN 60695-2-12) 灼热丝燃烧指数	> 850°C
Line to Line线对线	1450 VDC	GWIT (EN 60695-2-13) 灼热丝着火温度	> 750°C
Line-GND线对地	2250 VDC	CTI (EN 60112) 相比耐漏电起痕指数	> 250V
Case 外壳	Modified Plastic 改性塑胶	BPT (EN 60695-10-2) 球压温度	> 125°C
Wire leads style 电线类型	PVC, XLPE	Safety Combinations 安规电容组合	X1Y1, X1Y2, X2Y2, X2Y1
IP Class 防尘防水等级	IP68		

Model No. 型号	Rated Voltage 额定电压 (VDC)	Rated Current @ 40°C 额定电流	Electrical Diagram 线路图	Mechanical Diagram 外形图	Terminal Options 连接方式	
					In 入	Out 出
050.10101.00	115/250VAC	1 A	A	A/B/C	Wire exits/FASTON terminals	Wire exits/FASTON terminals
050.10301.00	115/250VAC	3 A	A	A/B/C	Wire exits/FASTON terminals	Wire exits/FASTON terminals
050.10801.00	115/250VAC	8 A	A	A/B/C	Wire exits/FASTON terminals	Wire exits/FASTON terminals
050.11001.00	115/250VAC	10 A	A	A/B/C	Wire exits/FASTON terminals	Wire exits/FASTON terminals
050.20101.00	115/250VAC	1 A	B	A/B/C	Wire exits/FASTON terminals	Wire exits/FASTON terminals
050.20601.00	115/250VAC	6 A	B	A/B/C	Wire exits/FASTON terminals	Wire exits/FASTON terminals
050.30101.00	115/250VAC	1 A	C	A/B/C	Wire exits/FASTON terminals	Wire exits/FASTON terminals
050.30601.00	115/250VAC	6 A	C	A/B/C	Wire exits/FASTON terminals	Wire exits/FASTON terminals

Please mark terminals type at the end of the P/N when order or inquiry /请在订单或询价单上注明端子类型

### LCR 050 Mechanical Outlines/外形图



### LCR 050 Mechanical Dimensions (mm)/外形尺寸

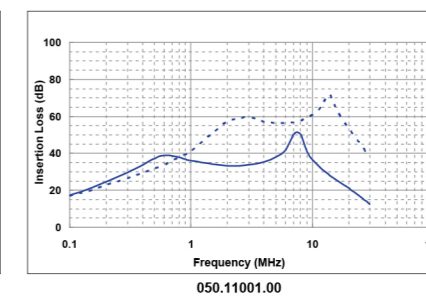
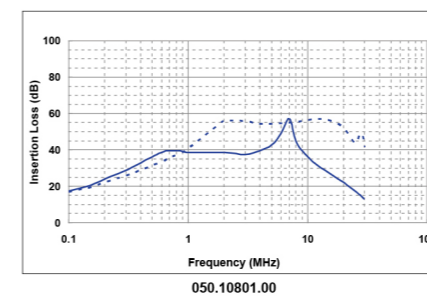
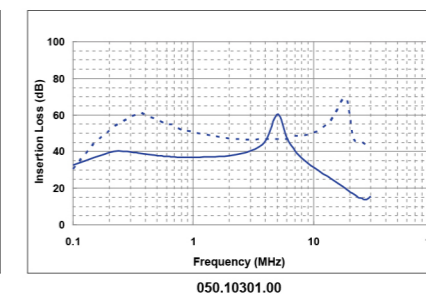
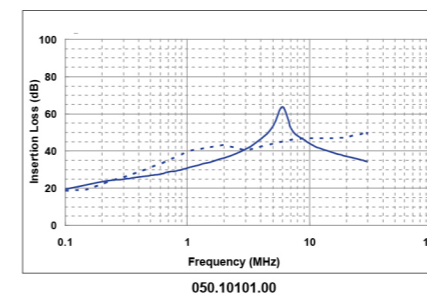
Model No.	A	B	C	D	E
050.10101.00	50.8	38.1	25.4	63.7	2*4.6
050.10301.00	50.8	38.1	25.4	63.7	2*4.6
050.10801.00	50.8	38.1	25.4	63.7	2*4.6
050.11001.00	50.8	38.1	25.4	63.7	2*4.6
050.20101.00	50.8	32.0	17.6	-	-
050.20601.00	50.8	32.0	17.6	-	-
050.30101.00	54.0	43.5	14.0	-	-
050.30601.00	54.0	43.5	14.0	-	-

所有单位为mm, 1 inch=25.4 mm (All dimensions in mm)

For reference purpose only 仅供参考

### LCR 050 Insertion Loss in dB measured in a 50Ω system /50 Ω环境下插入损耗

— Common Mode --- Differential Mode



☆ Other specifications, requirements and customizations can be offered upon request. /其它规格可以根据您的要求定做