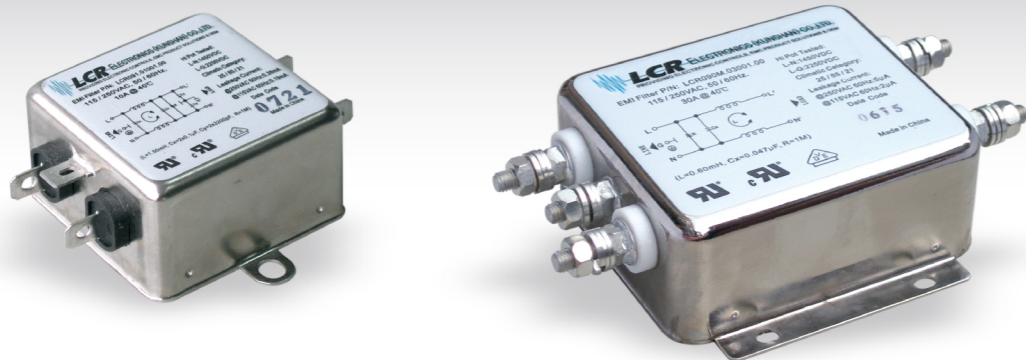


# LCR 090 / 090M

Single Phase Single Stage General Purpose and Medical Type Filters  
单相单极 (通用, 医疗) 型电源滤波器



## LCR 090 Series/系列

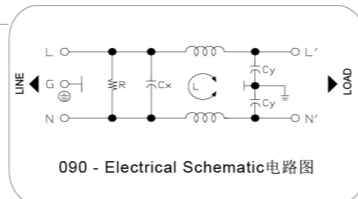
General Purpose Single Phase Single Stage Filters  
通用型单相单极电源滤波器

### Features/特点

Compact single phase, general purpose power line filter with faston / stud / wire terminals.  
紧凑单相, 通用的电源滤波器, 嵌入式、螺母或接线式连接

### Typical Applications/应用范围

White goods, single phase industrial equipment, power supply systems and controls.  
白色家电, 单相工业设备, 电源供应和控制系统



## LCR 090M Series/系列

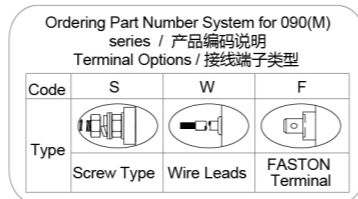
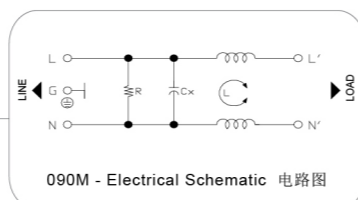
Low Leakage Current Medical Type Power Entry Filters  
低漏电流, 医疗型单相单极电源滤波器

### Features/特点

Low leakage current, compact single phase, general purpose power line filter with faston / stud / wire terminals.  
低漏电流, 集成单相, 通用电源滤波器, 嵌入式、螺母或接线式连接

### Typical Applications/应用范围

White goods under safety requirements, medical equipment, sensitive power supply and controls.  
有安全需求的白色家电, 医疗设备, 有感应的电源供应和控制系统



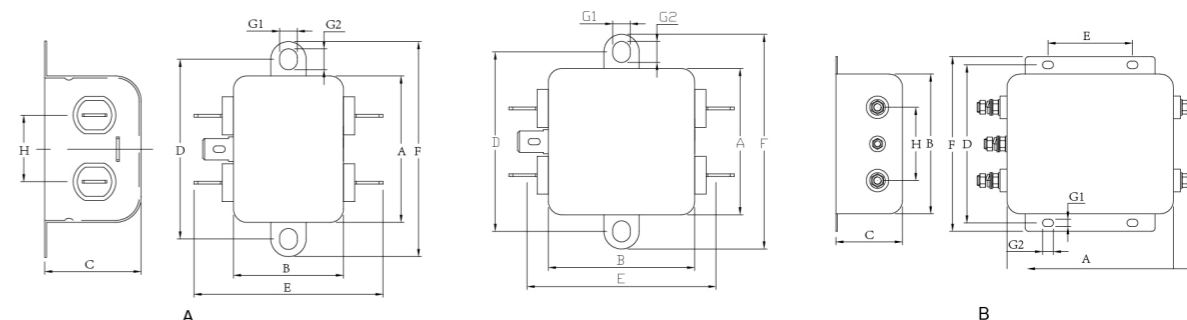
### Technical Data/技术参数

Rated Voltage Max. (V) 最高额定电压	250VAC	Leakage Current 090 Series 090系列 漏电流	
Rated Current (A) 额定电流	1 - 10A @ 40°C	@ 250 VAC 50Hz	0.89 mA Max.
Operating Frequency (Hz) 工作频率	50 / 60Hz	@ 115 VAC 60Hz	0.49 mA Max.
Hipot Rating 高压等级		Leakage Current 090M Series 090系列 漏电流	
(Line to Line 线对线)	1450V DC	@ 250 VAC 50Hz	10µA Max.
(Line to Ground 线对地)	2250V DC	@ 115 VAC 60Hz	5µA Max.
Case 外壳	Plated Steel	IP Class 防尘防水等级	IP65
Packaging Quantity 包装数量	90 Pcs per carton	Climatic category 气候类别 (EN60068-1)	25 / 85 / 21

Model No. 型号	Model No. 型号	Rated Current @ 40°C 额定电流	Mechanical Diagram 外形图	Unit Weight 单重 (g)	Terminal Options 连接方式	
					In 入	Out 出
090.00101.00	090M.00101.00	1 A	A	75	Faston 6.35*0.8 / M4	Faston 6.35*0.8 / M4
090.00301.00	090M.00301.00	3 A	A	76	Faston 6.35*0.8 / M4	Faston 6.35*0.8 / M4
090.00601.00	090M.00601.00	6 A	A	79	Faston 6.35*0.8 / M4	Faston 6.35*0.8 / M4
090.01001.00	090M.01001.00	10 A	A	87	Faston 6.35*0.8 / M4	Faston 6.35*0.8 / M4
090.01501.00	090M.01501.00	15 A	A	166	Faston 6.35*0.8 / M4	Faston 6.35*0.8 / M4
090.02001.00	090M.02001.00	20 A	A	157	Faston 6.35*0.8 / M4	Faston 6.35*0.8 / M4
090.02501.00	090M.02501.00	25 A	B	731	M4 / M6	M4 / M6
090.03001.00	090M.03001.00	30 A	B	741	M6	M6
090.04001.00	090M.04001.00	40 A	B	757	M6	M6

Please mark terminals type at the end of the P/N when order or inquiry /请在订单或询价单上注明端子类型

### LCR 090/090M Mechanical Outlines/外形图



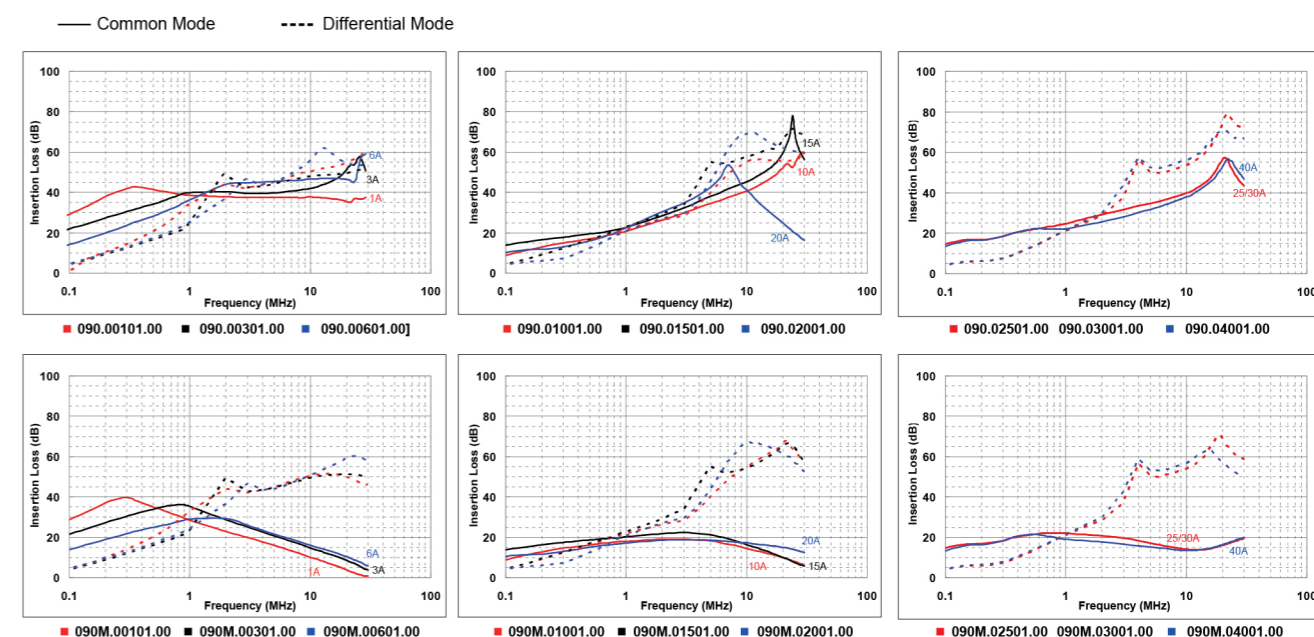
### LCR 090/090M Mechanical Dimensions (mm)/外形尺寸

Model No.	Model No.	A	B	C	D	E	F	G	H
090.00101.00	090M.00101.00	44	33	29	54	56.8	64	2-Φ5.3*6.3	20
090.00301.00	090M.00301.00	44	33	29	54	56.8	64	2-Φ5.3*6.3	20
090.00601.00	090M.00601.00	44	33	29	54	56.8	64	2-Φ5.3*6.3	20
090.01001.00	090M.01001.00	44	33	29	54	56.8	64	2-Φ5.3*6.3	20
090.01501.00	090M.01501.00	51	52	29	61	75.8	71	2-Φ5.3*6.3	20
090.02001.00	090M.02001.00	51	52	29	61	75.8	71	2-Φ5.3*6.3	20
090.02501.00	090M.02501.00	100	84	40	95	150.6	105	2-Φ4.5*6.5	44
090.03001.00	090M.03001.00	100	84	40	95	150.6	105	2-Φ4.5*6.5	44
090.04001.00	090M.04001.00	100	84	40	95	150.6	105	2-Φ4.5*6.5	44

所有单位为mm, 1 inch=25.4 mm (All dimensions in mm)

For reference purpose only 仅供参考

### LCR 090/090M Insertion Loss in dB measured in a 50Ω system /50 Ω环境下插入损耗



☆ Other specifications, requirements and customizations can be offered upon request. / 其它规格可以根据您的要求定做