

# LCR F9200

## Extended Temperature Range Double Stage Single Phase Filters

扩展温度系列单相双极滤波器



## LCR F9200 Series/系列

### Features/特点

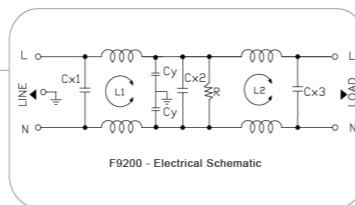
Extended temperature range for 80°C Ambient, high performance, double stage power line filters for dynamic and high ambient environments.  
扩展温度系列,单相双极,用于高温环境。

### Typical Applications/应用范围

Applications at high ambient environments or with limited temperature rise requirements.  
用于高温环境,对温度上升有限制的情况下使用。

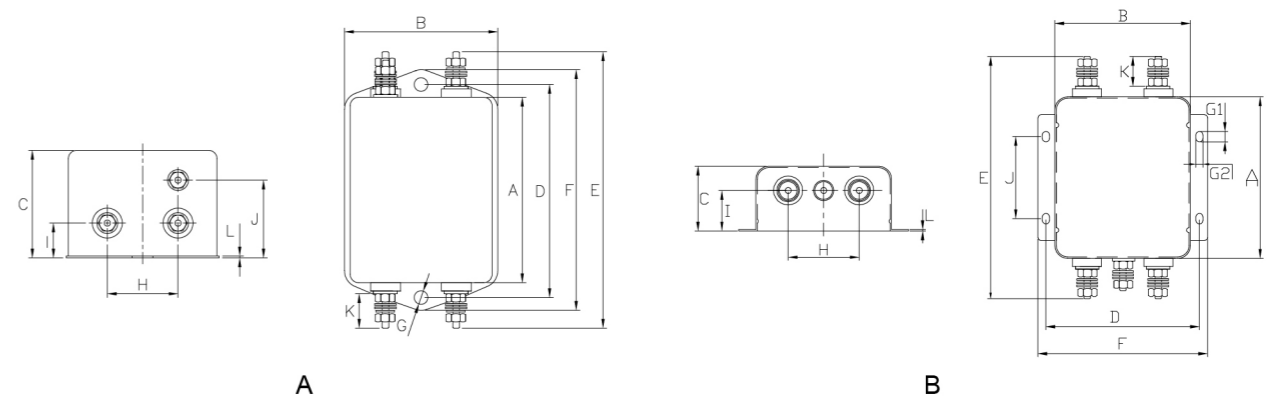
### Technical Data/技术参数

Rated Voltage Max. (V) 最高额定电压	250 VAC Max.	Leakage Current 漏电流	
Rated Current (A) 额定电流	5-35 A @ 80°C	@ 250VAC 50Hz	0.89 mA Max.
Operating Frequency (Hz) 工作频率	50/60 Hz	@ 115VAC 60Hz	0.49 mA Max.
Hipot Rating 高压等级		Operating temp 运行温度	- 40 to 100°C
(Line to Line 线对线)	1450 VDC	IP Class 防尘防水等级	IP65
(Line to Ground 线对地)	2250 VDC	Climatic category 气候类别 (EN-60068-1)	25 / 100 / 21
Case 外壳	Plated Steel		
Packaging Quantity 包装数量	Custom design		



Model No. 型号	Rated Current (A) @ 80°C 额定电流	L / N Termination / terminals L/N端 端子	Ground Termination / Terminals 接地端子	L (mH) 电感	Core 磁芯	Mechanical Diagram 外形图
F9200.00511.00	5.0	M4/8-32	M4/8-32	6.1	T25x15x10C	A
F9200.01011.00	10.0	M4/8-32	M4/8-32	7.2	T36x23x15C	A
F9200.02011.00	20.0	M4/8-32	M4/8-32	0.9	T38x19x13C	B
F9200.03011.00	30.0	M6/ 1/4-20	M6/ 1/4-20	0.6	T38x19x13C	B
F9200.03511.00	35.0	M6/ 1/4-20	M6/ 1/4-20	0.6	T38x19x13C	B

### LCR F9200 Mechanical Outlines/外形图



### LCR F9200 Mechanical Dimensions (mm)/外形尺寸

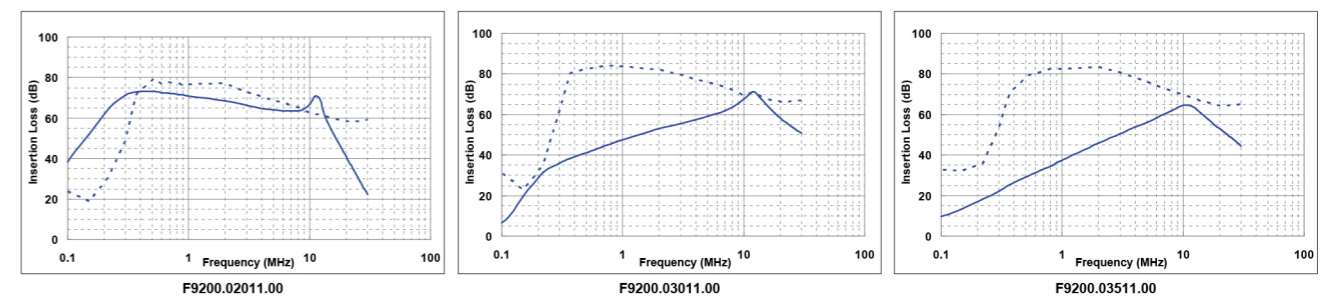
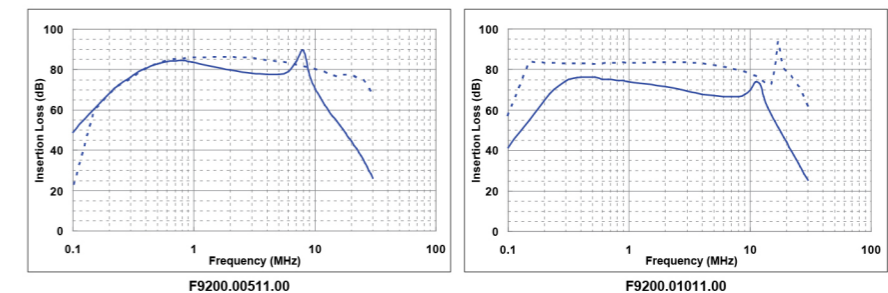
Model No.	A	B	C	D	E	F	G	H	I	J	K
F9200.00511.00	62.5	52.0	38.0	75.0	87.5	85.0	4.8	25.0	12.3	27.5	8.5
F9200.01011.00	92.5	58.0	41.0	105.0	117.5	115.0	5.0*6.8	30.0	13.0	29.0	8.5
F9200.02011.00	100.0	84.0	57.0	95.0	150.6	105.0	4.5*6.5	44.0	37.0	50.8	20.5
F9200.03011.00	100.0	84.0	57.0	95.0	150.6	105.0	4.5*6.5	44.0	37.0	50.8	20.5
F9200.03511.00	100.0	84.0	57.0	95.0	150.6	105.0	4.5*6.5	44.0	37.0	50.8	20.5

所有单位为mm, 1 inch=25.4 mm (All dimensions in mm)

For reference purpose only 仅供参考

### LCR F9200 Insertion Loss in dB measured in a 50Ω system /50 Ω环境下插入损耗

— Common Mode    - - - - Differential Mode



☆ Other specifications, requirements and customizations can be offered upon request. / 其它规格可以根据您的要求定做