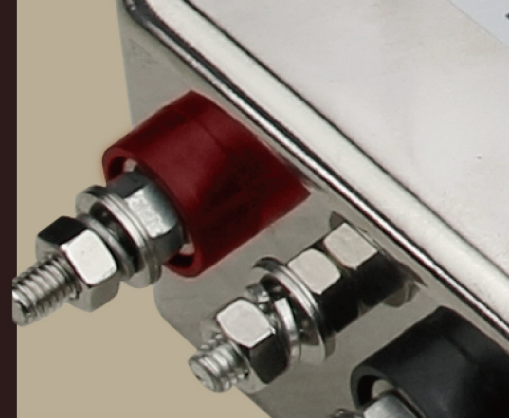


# LCR 052

High Performance Single and Double Stage DC Filters  
高性能单双极直流滤波器



## LCR 052 Series/系列

### Features/特点

High performance DC EMI filter. Faston/screw/wire terminals. CE tested and certified (CTI) based on IEC61000-6-1:2007 and IEC61000-6-3:2007+A1:2011.

高性能直流滤波器，可装快接端子、螺杆或带快接端子的PVC线，CE认证系列产品(CTI)

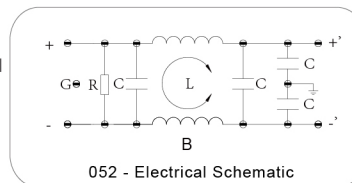
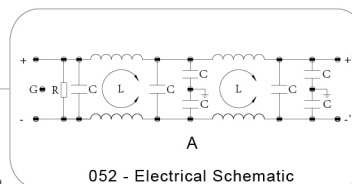
Telecommunications, DC air conditioners, electrical and electronic equipments, Medical equipment, Field equipment, and other DC applications.

电子电气设备，日用消费品，家用设备，医疗设备，办公自动化设备，通信设备

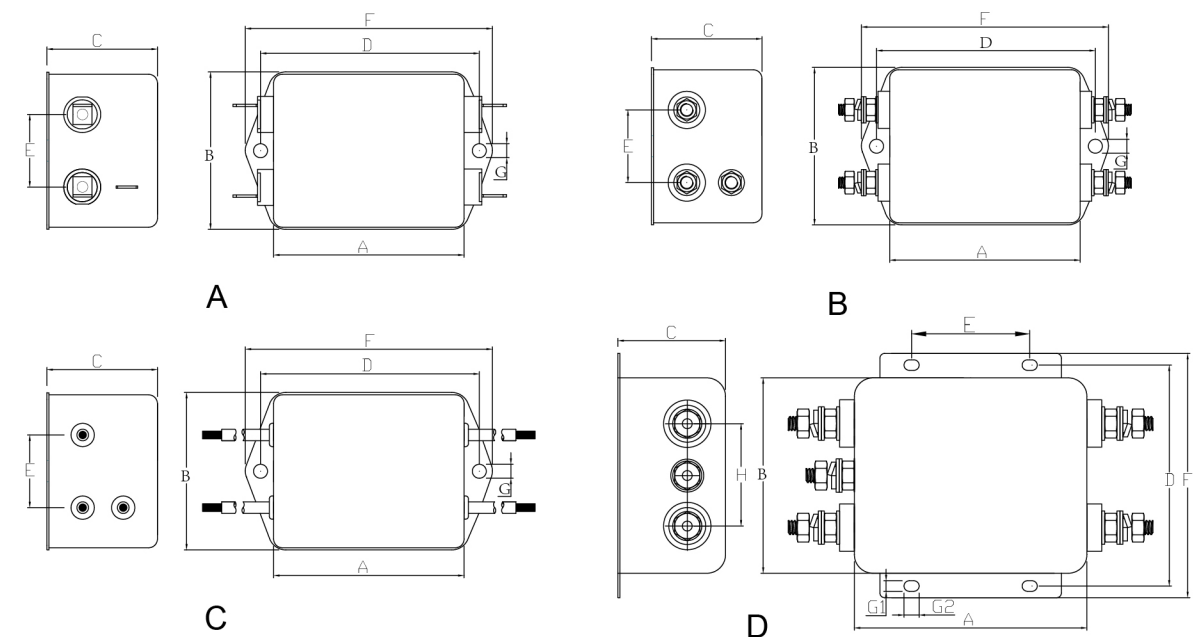
### Typical Applications/应用范围

Electrical lawn mower, vacuum cleaners, power tools, refrigerators and home appliances, medical equipments and other general applications.

割草机，吸尘器，吸尘器，电动工具，电冰箱和家用电器，医疗设备和其它的通用设备。



### LCR 052 Mechanical Outlines/外形图



### LCR 052 Mechanical Dimensions (mm)/外形尺寸

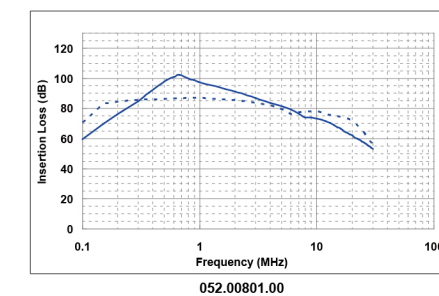
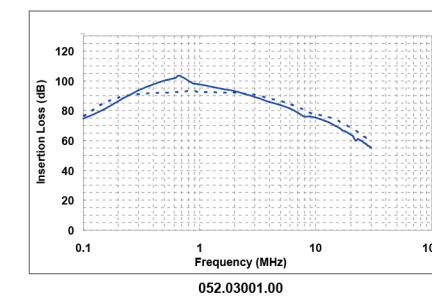
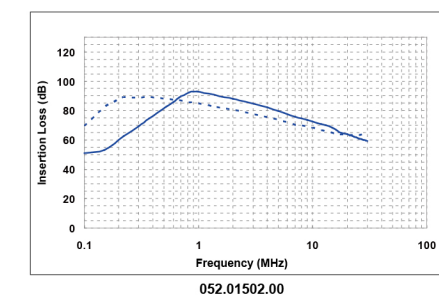
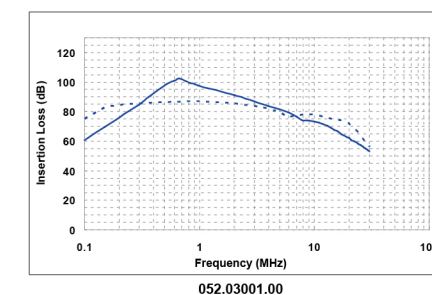
Model No.	A	B	C	D	E	F	G	H
052.00801.00	63.2	52	38	75	25	85	2*4.8	/
052.01004.00	63.2	52	38	75	25	85	2*4.8	/
052.01502.00	63.2	52	38	75	25	85	2*4.8	/
052.03001.00	100	84	57	95	50.8	105	4.5*6.5	44

所有单位为mm, 1 inch=25.4 mm (All dimensions in mm)

For reference purpose only 仅供参考

### LCR 052 Insertion Loss in dB measured in a 50Ω system /50 Ω环境下插入损耗

— Common Mode    - - - - Differential Mode



☆ Other specifications, requirements and customizations can be offered upon request. / 其它规格可以根据您的要求定做

Code	S	W	T	F
	Type	Type	Type	Type
Multi-terminal options 多种接线端子选择	Screw Type	Wire Leads	Terminal Block	FASTON Terminal

### Technical Data/技术参数

Rating Voltage Max. 最高额定电压(V)	80 VDC	Hipot Rating 高压等级	
Rated Current 额定电流(A)	8~30A@40°C	(Line to Line线对线)	240 VDC
Operating Frequency 频率(Hz)	NA	(Line to GND线对地)	1660 VDC
IP Class 防尘防水等级	IP65	Climatic Category 气候类别 (EN60068-1)	25/85/21
Case 外壳	Plated steel/ Galvanized steel		

Model No. 型号	Rated Voltage 额定电压 (VDC)	Rated Current @ 40°C 额定电流	Rated Current @ 40°C 额定电流	Terminal Options 连接方式	
				In 入	Out 出
052.00801.00	80VDC	8	A/B/C	S(M4)/W/T/F	S(M4)/W/T/F
052.01004.00	80VDC	10	A/B/C	S(M4)/W/T/F	S(M4)/W/T/F
052.01502.00	80VDC	15	A/B/C	S(M4)/W/T/F	S(M4)/W/T/F
052.03001.00	48VDC	30	D	S(M6)/W/T/F	S(M6)/W/T/F

Please mark terminals type at the end of the P/N when order or inquiry /请在订单或询价单上注明端子类型