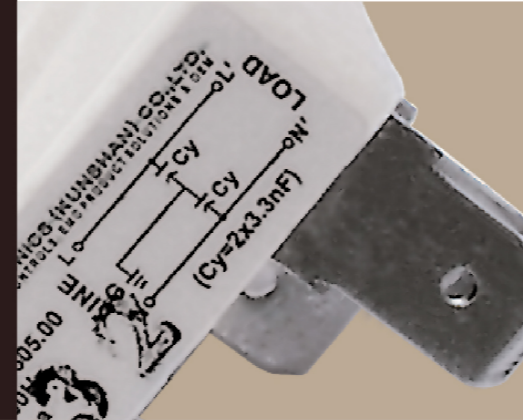
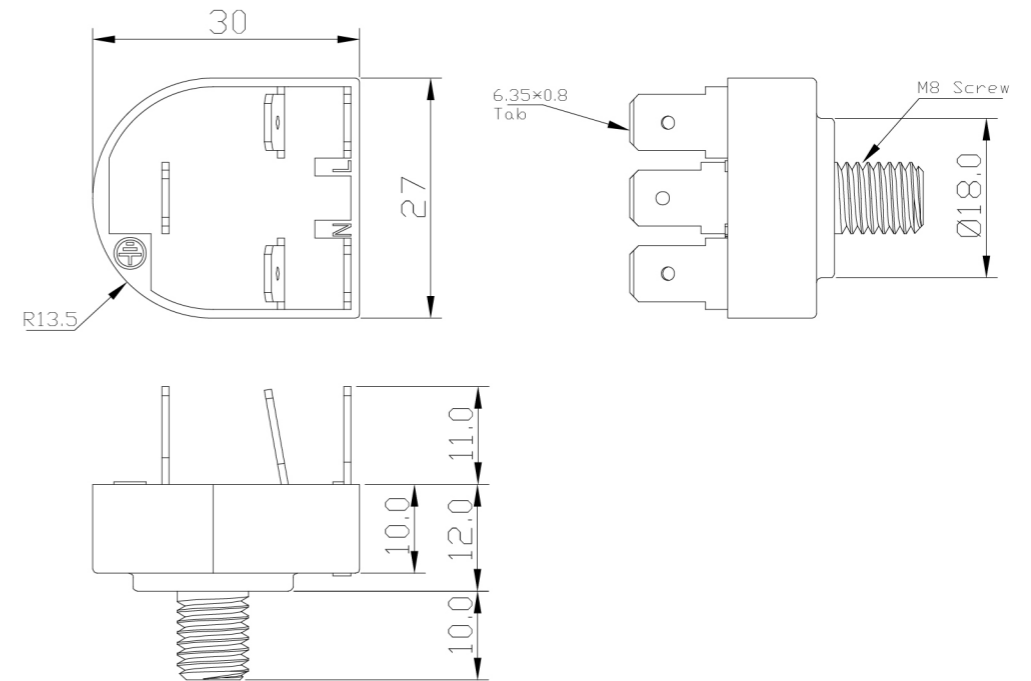


LCR 095/06

General, Low Size and Costs White Goods Filters
通用, 经济, 小型家电用电源滤波器



LCR 095/06 Mechanical Outlines/外形图



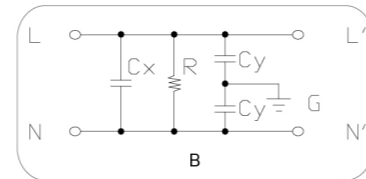
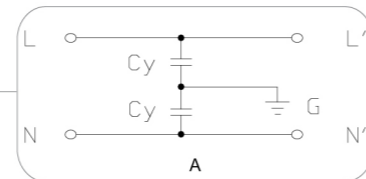
LCR 095/06 Series/系列

Features/特点

Low leakage current, small and compact, EMI capacitor filter.
低漏电流, 小巧, 简洁, 电磁干扰电容滤波器

Typical Applications/应用范围

Washers and other light white goods.
洗碗机及其它小型家电用电源滤波器



095/06 - Electrical Schematic电路图

Technical Data/技术参数

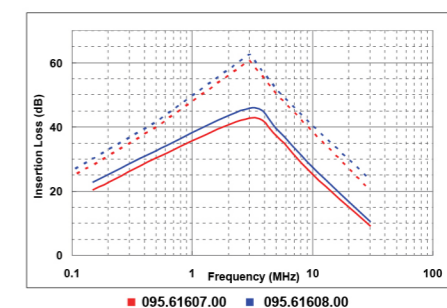
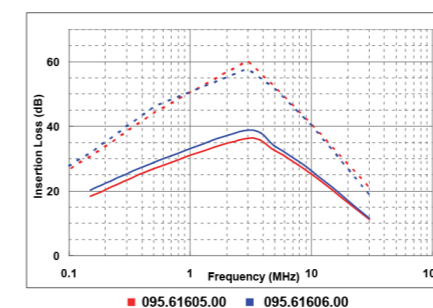
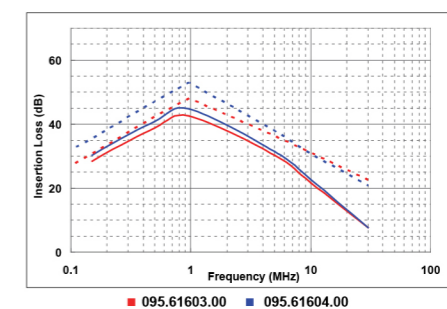
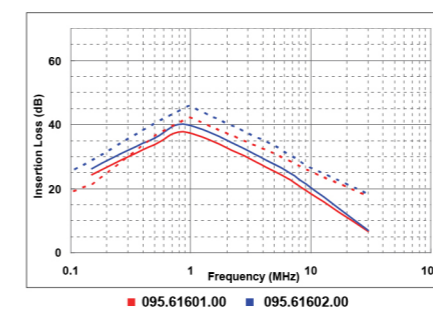
Rated Voltage Max. (V) 最高额定电压	250 VAC	Leakage Current 漏电流	
Rated Current (A) 额定电流	10 - 16A @ 40°C	@250 VAC 50Hz	0.63mA Max.
Operating Frequency (Hz) 工作频率	50 / 60Hz	IP Class 防尘防水等级	IP68
Hipot Rating 高压等级		Climatic category 气候类别 (EN60068-1)	25 / 100 / 21
(Line to Line 线对线)	1450V DC	Flammability 防火标准	UL94V-0
(Line to Ground 线对地)	2250V DC		
Case 外壳	Plastic Resin		
Packaging Quantity 包装数量	375 Pcs per carton		

Model No. 型号	Rated Current @ 40°C 额定电流	Cx uF	Cy nF	H mm	Schematic 电路图	Unit Weight 单重 (g)	Terminal Options 连接方式	
							In 入	Out 出
095.61601.00	16 A		1.0	10.0	A	100	Faston 6.35*0.8	Faston 6.35*0.8
095.61602.00	16 A		2.2	10.0	A	120	Faston 6.35*0.8	Faston 6.35*0.8
095.61603.00	16 A		3.3	10.0	A	100	Faston 6.35*0.8	Faston 6.35*0.8
095.61604.00	16 A		4.7	10.0	A	120	Faston 6.35*0.8	Faston 6.35*0.8
095.61605.00	16 A	0.1	1.0	16.0	B	120	Faston 6.35*0.8	Faston 6.35*0.8
095.61606.00	16 A	0.1	2.2	16.0	B	120	Faston 6.35*0.8	Faston 6.35*0.8
095.61607.00	16 A	0.1	3.3	16.0	B	120	Faston 6.35*0.8	Faston 6.35*0.8
095.61608.00	16 A	0.1	4.7	16.0	B	120	Faston 6.35*0.8	Faston 6.35*0.8

*Under Application / 正在申请

LCR 095/06 Insertion Loss in dB measured in a 50Ω system /50 Ω环境下插入损耗

— Common Mode - - - Differential Mode



* Other specifications, requirements and customizations can be offered upon request. / 其它规格可以根据您的要求定做