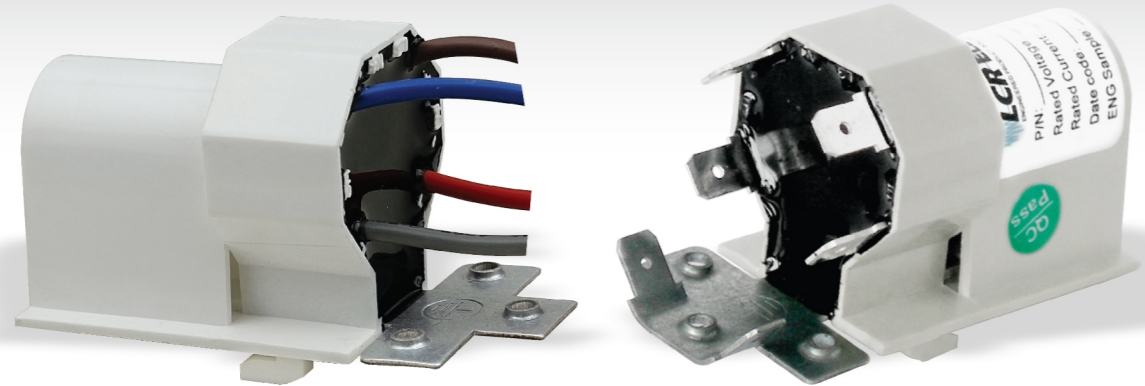
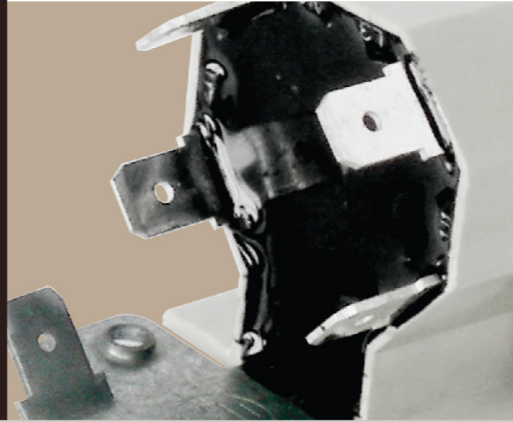


LCR 095 / 07

Top Load Washers, Dish Washers and Light White Goods EMI Filters

洗碗机及小型家电用电源滤波器

RoHS



LCR 095/07 Series/系列

Features/特点

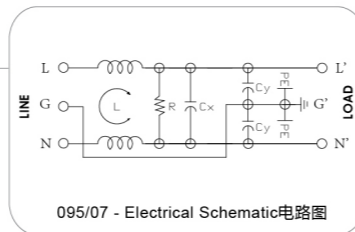
Small and Compact EMI Filters in a very economical solution
小巧紧凑电磁干扰滤波器和抑制电容滤波器

Typical Applications/应用范围

Washing machine, dish washers and other small white goods
洗衣机, 洗碗机及其它小型家电用电源滤波器

Technical Data/技术参数

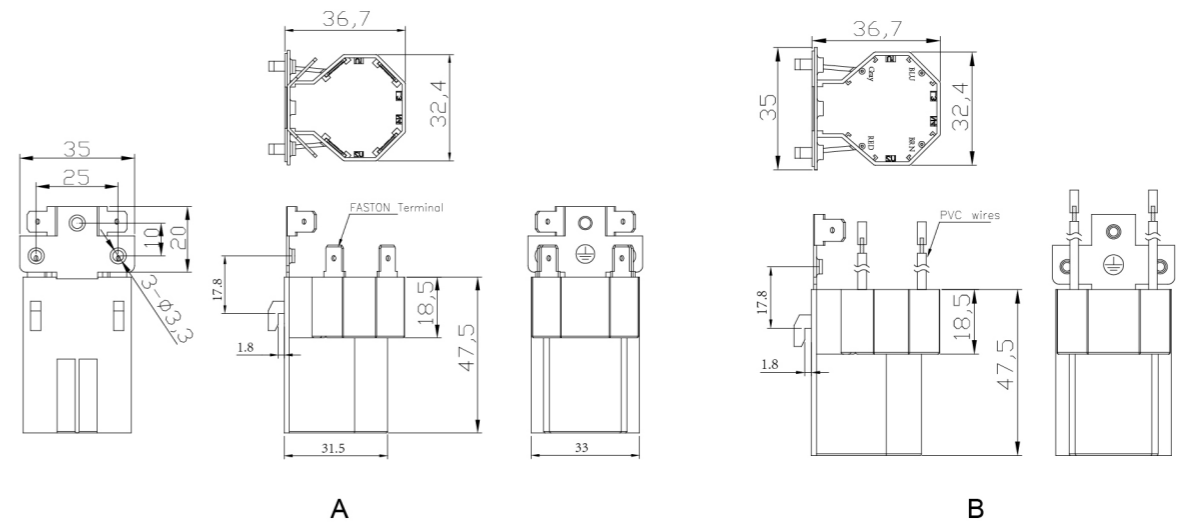
Rating Voltage Max. 最高额定电压(V)	250VAC	Leakage Current 漏电流	@ 250VAC / 50Hz	2.36mA Max
Rated Current 额定电流(A)	3A - 16A@40°C	IP Class 防尘防水等级		IP68
Frequency 频率(Hz)	50/60Hz	Flammability 防火标准		UL94V-0
Hi-Pot Rating 高压等级(L-GND)		GWFI (EN 60695-2-12) 灼热丝燃烧指数		850°C
(Line to Line线对线)	1450V DC	GWIT (EN 60695-2-13) 灼热丝发火温度		750°C
(Line-GND线对地)	2250V DC	CTI (EN 60112) 相比耐漏电起痕指数		250V
Case 外壳	Modified Plastics	BPT (EN 60695-10-2) 球压温度		> 125°C
Climatic Category 气候类别 (EN60068-1)	25/85/21			



Model No. 型号	Rated Voltage 额定电压 (VAC)	Rated Current @40 °C 额定电流	Mechanical Diagram 外形图	L (mH)	Cx (uF)	Cy (nF)	R Ω	Terminal Options 连接方式	
								In 入	Out 出
095.70301.00	115/250	3	A/B	2.3	1.0	4.7	0.68M	wire exit	wire exit
095.70301.01	115/250	3	A/B	2.3	1.0	4.7	0.68M	wire exit	wire exit
095.70302.00	115/250	3	A/B	2.3	1.0	4.7	0.68M	Faston 6.35*0.8	Faston 6.35*0.8
095.71001.00	115/250	10	A/B	1.5	0.47	10	0.68M	wire exit	wire exit
095.71001.01	115/250	10	A/B	1.5	0.47	10	0.68M	wire exit	wire exit
095.71602.00	115/250	16	A/B	0.5	0.47	10	0.68M	Faston 6.35*0.8	Faston 6.35*0.8
095.71603.00	250	16	A/B	0.1	22	1M		Faston 6.35*0.8	Faston 6.35*0.8
095.71606.00	250	16	A/B	0.1	25	1M		Faston 6.35*0.8	Faston 6.35*0.8

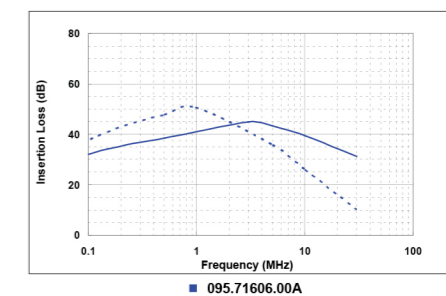
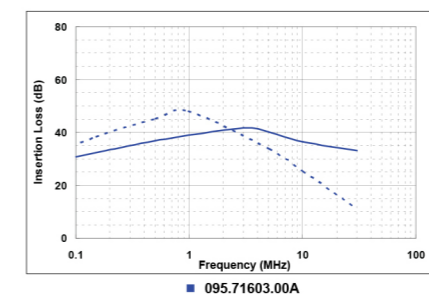
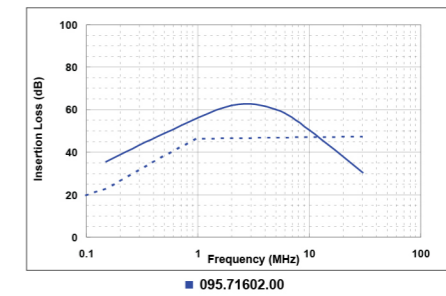
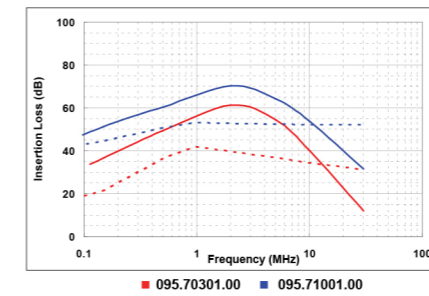
Please mark terminals type at the end of the P/N when order or inquiry /请在订单或询价单上注明端子类型

LCR 095/07 Mechanical Outlines/外形图



LCR 095/07 Insertion Loss in dB measured in a 50Ω system /50 Ω环境下插入损耗

— Common Mode ---- Differential Mode



Other specifications, requirements and customizations can be offered upon request. / 其它规格可以根据您的要求定做