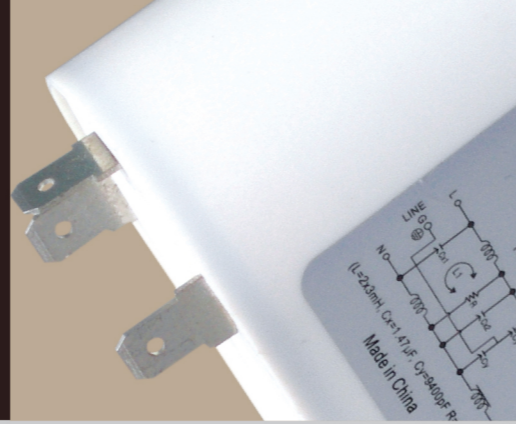
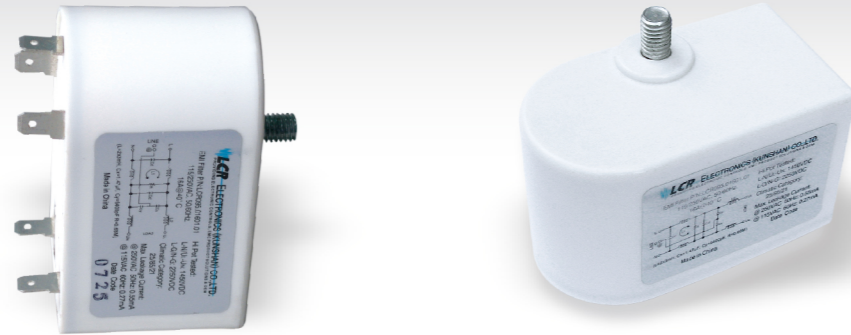


# LCR 095/03/04

High Performance Washing Machine Filters  
白色家电通用型电源滤波器

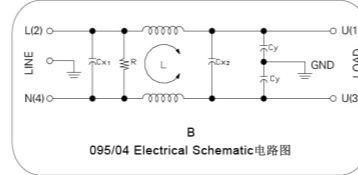
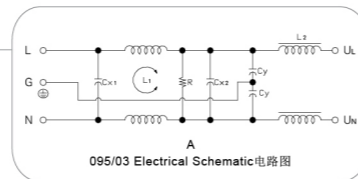
RoHS



## LCR 095/03 Series/系列

**Features/特点**  
Outstanding differential mode suppression.  
卓越的差模抑制性能

**Typical Applications/应用范围**  
Top load and front load washing machine.  
滚筒和涡轮洗衣机



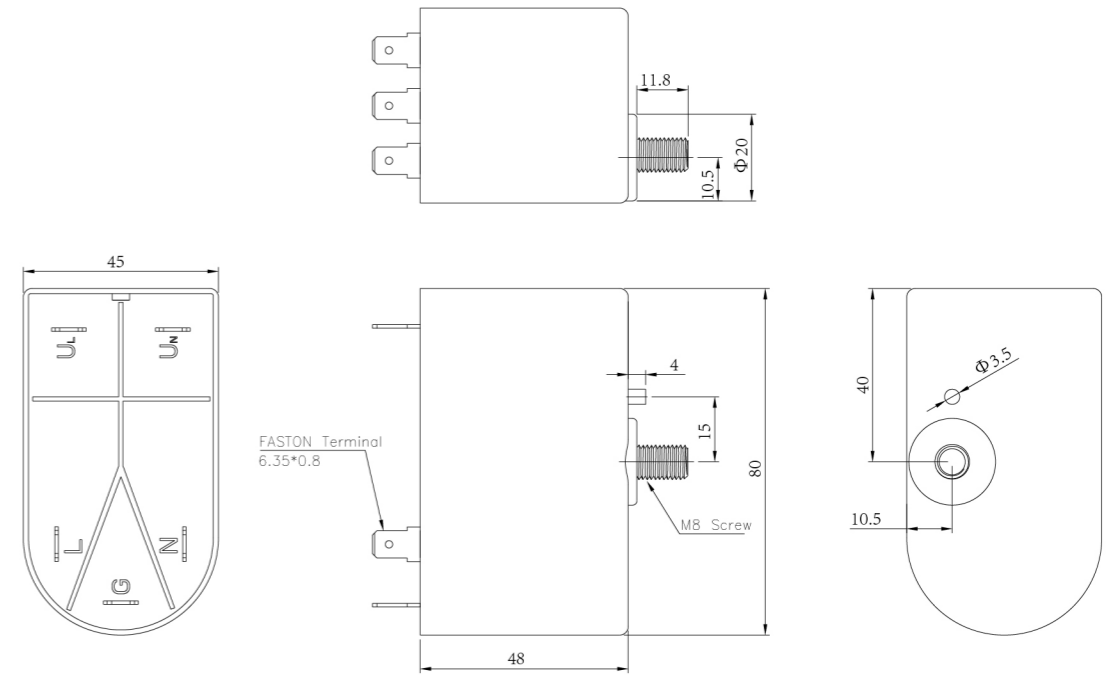
### Technical Data/技术参数

|                               |                   |  |              |
|-------------------------------|-------------------|--|--------------|
| Rated Voltage Max. (V) 最高额定电压 | 250VAC            | 095/03 & 095/04 Leakage Current 095/03&095/04漏电流 |              |
| Rated Current (A) 额定电流        | 10 - 16A @ 40°C   | @250 VAC 50Hz                                    | 0.89mA Max.  |
| Operating Frequency (Hz) 工作频率 | 50 / 60Hz         | @115 VAC 60Hz                                    | 0.49mA Max.  |
| Hipot Rating 高压等级             |                   | IP Class 防尘防水等级                                  | IP53         |
| (Line to Line 线对线)            | 1450V DC          | Climatic category 气候类别 (EN60068-1)               | 25 / 85 / 21 |
| (Line to Ground 线对地)          | 2250V DC          | Flammability 防火标准                                | UL94V-0      |
| Case 外壳                       | Plastic Resin     |  |              |
| Packaging Quantity 包装数量       | 50 Pcs per carton |  |              |

| Model No.<br>型号 | Rated Current<br>@ 40°C<br>额定电流 | CM<br>L mH | DM<br>L uH | Cx1<br>uF | Cx2<br>uF | Cy<br>nF | R<br>Ω | Schematic<br>电路图 | Unit Weight<br>单重 (g) | Terminal Options 连接方式 |                 |
|-----------------|---------------------------------|------------|------------|-----------|-----------|----------|--------|------------------|-----------------------|-----------------------|-----------------|
|                 |                                 |            |            |           |           |          |        |                  |                       | In 入                  | Out 出           |
| 095.31001.00    | 10 A                            | 3          | 18         | 0.47      | 1         | 4.7      | 0.68M  | A                | 200                   | Faston 6.35*0.8       | Faston 6.35*0.8 |
| 095.31201.00    | 12 A                            | 3          | 18         | 0.47      | 1         | 4.7      | 0.68M  | A                | 200                   | Faston 6.35*0.8       | Faston 6.35*0.8 |
| 095.31601.00    | 16 A                            | 3          | 18         | 0.47      | 1         | 4.7      | 0.68M  | A                | 200                   | Faston 6.35*0.8       | Faston 6.35*0.8 |
| 095.31602.00    | 16 A                            | 3          | 18         | 0.68      | 1         | 4.7      | 0.68M  | A                | 200                   | Faston 6.35*0.8       | Faston 6.35*0.8 |
| 095.41001.00    | 10 A                            | 12         | /          | 0.47      | 0.68      | 4.7      | 0.68M  | B                | 200                   | Faston 6.35*0.8       | Faston 6.35*0.8 |
| 095.41201.00    | 12 A                            | 8          | /          | 0.47      | 0.68      | 4.7      | 0.68M  | B                | 200                   | Faston 6.35*0.8       | Faston 6.35*0.8 |
| 095.41601.00    | 16 A                            | 5          | /          | 0.47      | 0.68      | 4.7      | 0.68M  | B                | 200                   | Faston 6.35*0.8       | Faston 6.35*0.8 |
| 095.41602.00    | 16 A                            | 12.5       | /          | 0.47      | 0.68      | 4.7      | 0.68M  | B                | 200                   | Faston 6.35*0.8       | Faston 6.35*0.8 |

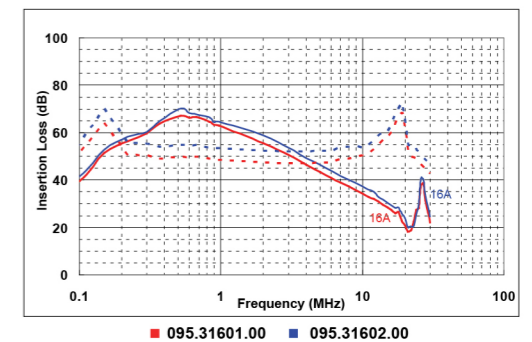
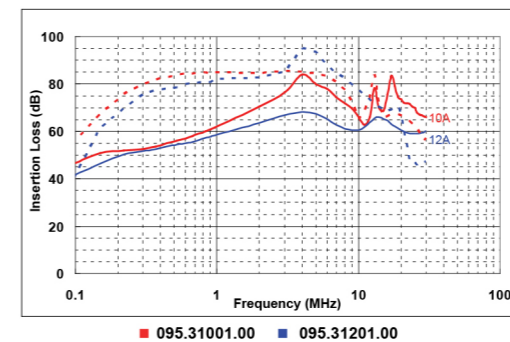
## LCR 095/03 Mechanical Outlines/外形图

For reference purpose only 仅供参考  
所有单位为mm, 1 inch=25.4 mm (All dimensions in mm)



## LCR 095/03 Insertion Loss in dB measured in a 50Ω system /50 Ω环境下插入损耗

— Common Mode    - - - - Differential Mode



☆ Other specifications, requirements and customizations can be offered upon request. / 其它规格可以根据您的要求定做