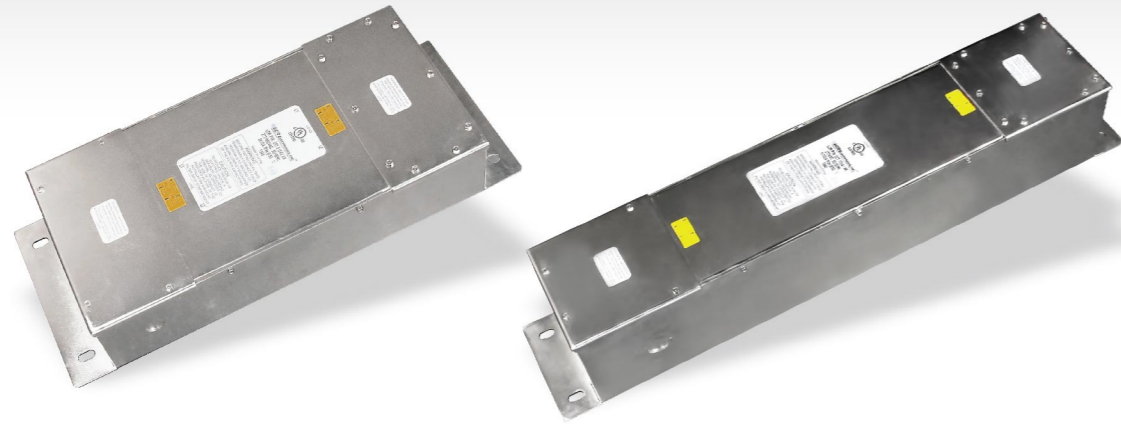


LCR 057/01 100dB@14KHz

High Performance Shielded Room Filters
高性能屏蔽室电源滤波器



LCR 057/01 Series/系列

Features/特点

UL Listed, 100dB from 14KHz. and up to 10GHz. (20GHz. - 40GHz. available per order), single line, dual lines, three lines and four lines models, shielded, sealed and robust filters for shielded facilities, *easy mounting and installation, threaded pipe with EMI gasket (Load) and knockouts inlets (Line), meet MIL-STD 220 and CISPR 17

UL认证产品,从14KHz到20GHz(40GHz,可定制)有100dB的衰减,单线,双线,三线和四线4款模式,为屏蔽室设计的屏蔽密封式滤波器,简洁的安装方式,配有EMI屏蔽布的螺纹管(输出端)和可敲击孔进线孔(输入端),符合MIL-STD 220 和 CISPR 17

☆ User manual for easy installation and installation hardware kit provided with each unit
配有用户安装手册及小五金零件

Typical Applications/应用范围

Shielded rooms and facilities, shielded enclosures, secured communication areas, EMC test laboratories, anechoic chambers, MRI screened facilities and other shielded facilities and applications.

屏蔽室,屏蔽设备,屏蔽元件,安全通信领域,EMC实验室,无回音室,MRI屏蔽设施和其它的屏蔽设备应用领域

Technical Data/技术参数

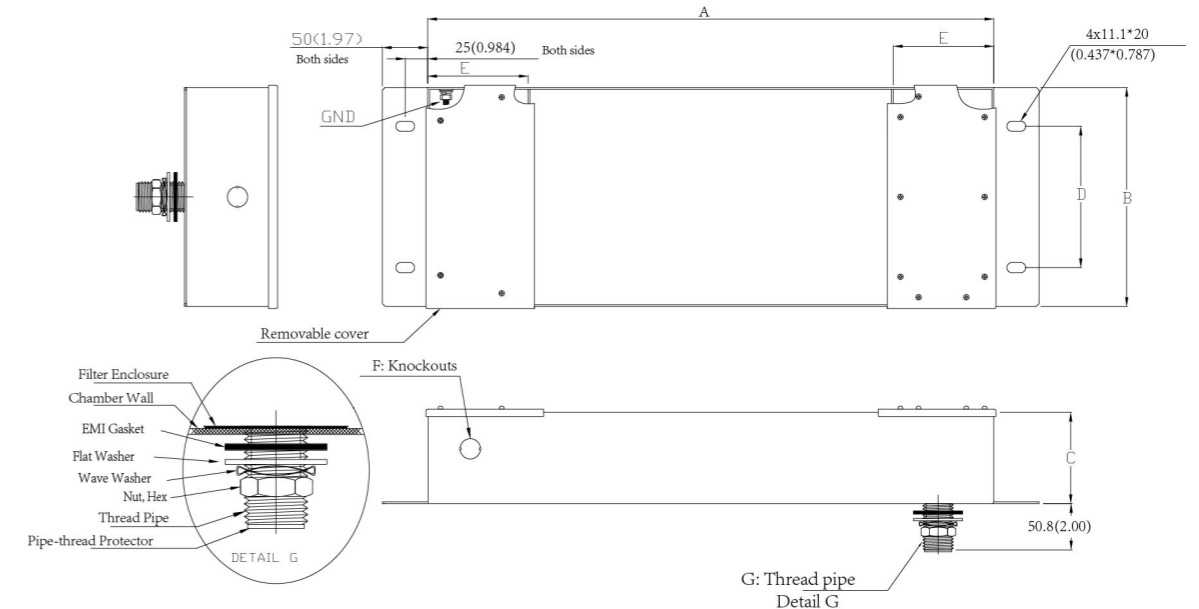
Rated Voltage 最高额定电压(V)	277 / 480 VAC	** Max. Capacitive Reactive Current per line (Reactive) 漏电流	See Table
Rated Current 额定电流(A)	10A~250A @ 50°C	Voltage Drop 跌落电压	1% max.
Frequency 频率(Hz)	50/60 Hz.	Overload (of rated current, 15 Minutes / hour) 过载能力	40% max.
Hi-Pot Rating 高压等级(L-GND)	2200 VDC	IP Class 防尘防水等级	> IP 65
Storage Temperature	From -40C to +85C	Case Material 外壳材质	Plated Steel
Operating Temperature	From -40C to +85C	Climatic Category 气候类别 (EN 60068-1)	25/85/21

**WARNING: High Capacitive Reactive Current to Ground. Connect filter to Ground (PE) before apply power to / through filter
警告:大容接地电容会产生高漏电流,请确保通电前接地良好!

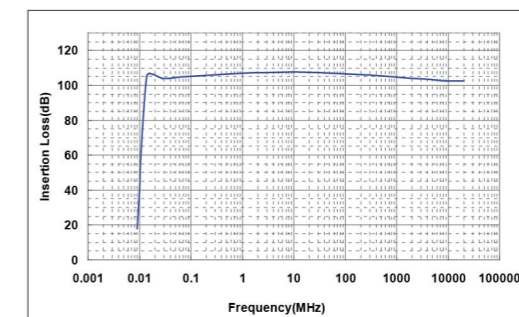
Model No. 型号	Lines 线数	Rated Voltage (VAC) 额定电压	Rated Current @40°C 额定电流	Reactive A Per line @230V/50Hz 漏电流	Mechanical Dimension shown in mm (inch) 外形尺寸							Terminal 连接方式 GND/Line/Load 地线/入/出	Ref. Unit Weight 重量
					A Length 长	B Width 宽	C Height 高	D Footprint 安装孔	E Chamber 操作空间	F Knockouts 入线敲击孔	G (NPT) Thread 螺纹管		
057.01011.00	1	277	10	1.9	530 (20.87)	110 (4.33)	100 (3.94)	80 (3.15)	110 (4.33)	22.23 (0.875)	1-11.5	M6 Screw	9 Kg
057.03011.00		277	30	3.3	580 (22.84)	120 (4.72)	130 (5.12)	80 (3.15)	110 (4.33)	22.23 (0.875)	1-11.5	M6 Screw	14 Kg
057.06011.00		277	60	4.1	690 (27.16)	140 (5.51)	130 (5.12)	80 (3.15)	110 (4.33)	22.23 (0.875)	1-11.5	M6 Screw	20 Kg
057.10011.00		277	100	5.5	850 (33.46)	150 (5.91)	140 (5.51)	100 (3.94)	150 (5.90)	34.93 (1.375)	1-11.5	M10 Screw	25 Kg
057.25011.00	2	277	250	5.5	1100 (43.31)	200 (7.88)	140 (5.51)	100 (3.94)	150 (5.90)	34.93 (1.375)	1-11.5	M12 Screw	50 Kg
057.01012.00		277/480	10	1.9	530 (20.87)	220 (8.66)	100 (3.94)	160 (6.30)	110 (4.331)	22.23 (0.875)	1-11.5	M6 Screw	20 Kg
057.03012.00		277/480	30	3.3	580 (22.84)	240 (9.44)	130 (5.12)	160 (6.30)	110 (4.33)	22.23 (0.875)	1-11.5	M6 Screw	30 Kg
057.06012.00		277/480	60	4.1	690 (27.16)	280 (11.02)	130 (5.12)	160 (6.30)	110 (4.33)	22.23 (0.875)	1-11.5	M6 Screw	35 Kg
057.10012.00	3	277/480	100	5.5	850 (33.46)	300 (11.82)	140 (5.51)	200 (7.88)	150 (5.90)	34.93 (1.375)	1.5-11.5	M10 Screw	40 Kg
057.25012.00		277/480	250	5.5	1100 (43.31)	400 (15.76)	140 (5.51)	200 (7.88)	150 (5.90)	34.93 (1.375)	1.5-11.5	M12 Screw	95 Kg
057.01013.00		277/480	10	1.9	530 (20.87)	330 (12.99)	100 (3.94)	240 (9.45)	110 (4.33)	22.23 (0.875)	1-11.5	M6 Screw	30 Kg
057.03013.00		277/480	30	3.3	580 (22.84)	360 (14.16)	130 (5.12)	240 (9.45)	110 (4.33)	22.23 (0.875)	1-11.5	M6 Screw	35 Kg
057.06013.00	4	277/480	60	4.1	690 (27.16)	420 (16.53)	130 (5.12)	240 (9.45)	110 (4.33)	22.23 (0.875)	1-11.5	M6 Screw	40 Kg
057.10013.00		277/480	100	5.5	850 (33.46)	450 (17.73)	140 (5.51)	300 (11.81)	150 (5.90)	34.93 (1.375)	1.5-11.5	M10 Screw	55 Kg
057.25013.00		277/480	250	5.5	1100 (43.31)	600 (23.62)	140 (5.51)	300 (11.81)	150 (5.90)	44.05 (1.734)	1.5-11.5	M12 Screw	115 Kg
057.01014.00		277/480	10	1.9	530 (20.87)	440 (17.32)	100 (3.94)	320 (12.60)	110 (4.33)	22.23 (0.875)	1-11.5	M6 Screw	35 Kg
057.03014.00	4	277/480	30	3.3	580 (22.84)	480 (18.88)	130 (5.12)	320 (12.60)	110 (4.33)	22.23 (0.875)	1-11.5	M6 Screw	40 Kg
057.06014.00		277/480	60	4.1	690 (27.16)	560 (22.04)	130 (5.12)	320 (12.60)	110 (4.33)	34.93 (1.375)	1.5-11.5	M6 Screw	45 Kg
057.10014.00		277/480	100	5.5	850 (33.46)	600 (23.64)	140 (5.51)	400 (15.75)	150 (5.90)	34.93 (1.375)	1.5-11.5	M10 Screw	70 Kg
057.25014.00		277/480	250	5.5	1100 (43.31)	800 (31.50)	140 (5.51)	400 (15.75)	150 (5.90)	44.05 (1.734)	2.5-11.5	M12 Screw	140 Kg

For frequency above 10 GHz, increase dimensions A by 100mm(3.94").

LCR 057/01 Mechanical Outlines/外形图



LCR 057/01 Insertion Loss in dB measured in a 50Ω system /50 Ω环境下插入损耗



☆ Other specifications, requirements and customizations can be offered upon request. / 其它规格可以根据您的要求定做